



# Keep Winter Park Beautiful & Sustainable Advisory Board Regular Meeting

## Agenda

**January 20, 2026 @ 11:45 AM**

City Hall Commission Chambers  
401 S. Park Avenue

### welcome

Agendas and all backup material supporting each agenda item are accessible via the city's website at [cityofwinterpark.org/meetings/](http://cityofwinterpark.org/meetings/) and include virtual meeting instructions.

### assistance & appeals

Persons with disabilities needing assistance to participate in any of these proceedings should contact the City Clerk's Office ([407-599-3277](tel:407-599-3277)) at least 48 hours in advance of the meeting.

"If a person decides to appeal any decision made by the Board with respect to any matter considered at this hearing, a record of the proceedings is needed to ensure that a verbatim record of the proceedings is made, which record includes the testimony and evidence upon which the appeal is to be based." (F.S. 286.0105).

### please note

Times are projected and subject to change.

**1. Call to Order**

**2. Approval of Minutes**

- a. Minutes of December 16, 2025 1 Minute

**3. Public Comments (for items not on the agenda): Three minutes allowed for each speaker**

**4. Action Items**

- a. 2026 Green School Grant Program 30 Minutes

**5. Non-Action Items**

**6. Staff Updates**

- a. Natural Resources & Sustainability 10 Minutes
  - Martin Luther King Jr. Learning Garden Update
  - KWPB&S Note Card Update

- b. Upcoming Events 0 Minutes
  - MLK Park Litter Clean-up — January 24th 9 am @ MLK Park
  - Love the Earth Tree Planting — February 7th 9 am @ Howell Branch Preserve

**7. Board Comments**

- a. Green Minutes 5 Minutes
- b. New Business/Announcements 5 Minutes

**8. Upcoming Agenda Items**

- a. Discussion of Upcoming Agenda Items 5 Minutes

**9. Adjournment**



# Keep Winter Park Beautiful & Sustainable Advisory Board Regular Meeting Minutes

December 16, 2025 at 11:45 AM

City Hall Commission Chambers  
401 S. Park Avenue

## **Present**

Becky Distad, John Page, Zeina Matar-Ghantous, Susy Scarlatos, Tom Mould

## **Absent**

Terry Hotard, Kathy Chonody

## **Staff Present**

Director of Natural Resources & Sustainability Gloria Eby, Sustainability Manager Sara Miller, Sustainability Specialist Nicole Marshall, Administrative Coordinator Victoria Tabor

## **1. Call to Order**

The meeting was called to order at 11:47 am. The decorum statement was read.

## **2. Approval of Minutes**

- a. Minutes of November 5, 2025

**Motion made by Mr. Page to approve the minutes, seconded by Mr. Mould.  
Motion carried unanimously with a 5-0 vote.**

## **3. Public Comments (for items not on the agenda)**

## **4. Action Items**

- a. Winter Park Seed Library Funding — Jennifer Russo, Community Outreach Librarian

Ms. Marshall introduced Jennifer Russo from the Winter Park Library and outlined the board's donations supporting the Winter Park Seed Library. Ms. Russo-Schrader expressed gratitude for the support and provided further details about the program, which is among the library's most popular initiatives. The library offers 10 varieties of seeds, three times a year—fall, winter, and spring. With the funding, a gardening program for children at the community center operates, and seniors have expressed interest in a garden plot. Thanks to increased funding, the library has raised the seed packet count from 300 to 400 for each variety and improved seed quality.

**Motion made by Ms. Distad to approve library seed funding in the amount of \$3,300.00; seconded by Mr. Page. The motion carried unanimously by a 5-0 vote.**

A suggestion was made to collect the data on the most popular seed variety.

b. 2023 Sustainability Action Plan Report Card Final

The final draft of the Sustainability Action Plan report card was displayed with positive comments.

**The board unanimously approved the Sustainability Action Plan Report Card with nods of agreement.**

**5. Non-Action Items**

a. OCPS Green Schools Awards Banquet Certificate Presentation

Ms. Miller presented the Orange County Public School (OCPS) Green Schools Awards Banquet certificate in recognition of the partnership with OCPS. A photograph was taken to share on social media.

**6. Staff Updates**

a. Natural Resources & Sustainability

Food Insecurity Update – Ms. Miller highlighted key points on the food insecurity update. The slide listed organizations and partnerships that support food donations and address food insecurity. This item was included in the agenda packet for further review.

Utility Box Maintenance Update - Ms. Eby stated there is no new information on the utility box maintenance. Facilities will provide the GIS layer that prioritizes maintenance activities related to the boxes. She also highlighted the board's effort in keeping Winter Park beautiful to the Utilities Advisory Board.

KWPB&S Note Card Update - The nature note cards are available at events, and the purchase link is live on the website <https://cityofwinterpark.org/departments/natural-resources-sustainability/sustainability-division/community-partners/>. Alternatively, you can email [sustainability@cityofwinterpark.org](mailto:sustainability@cityofwinterpark.org) to order.

b. Upcoming Events

Boat Parade & Watch Party — Saturday, December 13th 5–7 pm @ Dinky Dock

Merry Tuba Concert — Saturday, December 20th 1 pm @ Central Park

Ms. Marshall notified the board about a volunteer event with AdventHealth University Service Day in November. The team of 84 volunteers was divided into two groups; the first collected 134 pounds of trash and removed invasives amounting to 300 gallons at Howell Branch Preserve. The second group removed 800 gallons of invasives at Mead Gardens.

Ms. Miller provided a brief overview of the boat parade turnout, while Ms. Eby shared the results of the winners.

**7. Board Comments**

Ms. Matar-Ghantous commented that the hazardous waste event was well planned and executed.

- a. Green Minutes
- b. New Business/Announcements

**8. Upcoming Agenda Items**

- a. Discussion of Upcoming Agenda Items

**9. Adjournment**

The meeting adjourned at 12:10 p.m.

Approved by the board on  
/s/ Bahiyah Layton, Board Coordinator

DRAFT



# Keep Winter Park Beautiful & Sustainable Advisory Board

## agenda item 4.a

### item type

Action Items

### meeting date

January 20, 2026

### prepared by

Victoria Tabor, Administrative Coordinator III

### approved by

Victoria Tabor, Administrative Coordinator III

### subject

2026 Green School Grant Program

### motion | recommendation

Staff recommends awarding Green Schools Grant funding as follows: Edgewater High School (\$500), Audubon Park School (\$565), Dommerich Elementary School (\$920), Orlando Gifted Academy (\$1,500), and Howell Branch Academy (\$1,515).

### background

The city's Keep Winter Park Beautiful & Sustainable (KWPB&S) Advisory Board Green Schools Grant Program awards mini grants to public and private schools serving Winter Park residents to help support their efforts to achieve sustainability goals and beautify their campus while engaging and educating students in the practices of sustainability. For 2026, there is \$5,000 in available funding. This year, 10 applications were received from the following schools:

- All Saints School
- Audubon Park School
- Dommerich Elementary School
- Edgewater High School
- Glenridge Middle School
- Howell Branch Academy
- Methodist School for Early Education
- Orlando Gifted Academy
- Park Maitland South
- Welbourne Avenue Nursery and Preschool

## **alternatives | other considerations**

### **fiscal impact**

### **attachments**

1. 2026 Green School Grant Applicants Evaluation
2. All Saints School
3. Audubon Park School
4. Dommerich Elementary School
5. Edgewater High School
6. Glenridge Middle School
7. Howell Branch Academy
8. Methodist School for Early Education
9. Orlando Gifted Academy
10. Park Maitland South
11. Welbourne Avenue Nursery & Preschool

2026 Green Schools Grant Applications (\$5,000 available in funding)

School Name:	Project Title:	Project Description:	Amount Requested:	New Applicant?	Previous Recipient? (within past 3 years)	SAP Focus Area	Staff Notes
All Saints School	Outdoor Play Kitchen	All Saints School proposes creating an Outdoor Play Kitchen to expand its outdoor learning space and strengthen students' connection to the natural environment. The kitchen will encourage imaginative play using natural materials—such as rocks, leaves, dirt, and herbs—in place of plastic toys. Students will participate in collecting and sorting materials, painting rocks to represent food items, and planting herbs near the kitchen. The space will be integrated into classroom activities to support hands-on, nature-based learning.	\$4,350 for custom mud kitchen fabrication and installation. The school will be contributing to the funding of the project through fundraisers.	No	Yes - 2025, 2024, 2023	Recycling, natural resources	Neutral
Audubon Park School	Sustainable Stories	Audubon Park School proposes <i>Sustainable Stories</i> , a student-led project that highlights local businesses with sustainability-focused missions. Students from multiple classes will research, interview, and document these partners through articles, videos, and design work. The stories will be compiled into a printed and digital book available for sale in each business. The project strengthens school-community partnerships while educating families about local sustainability practices. They hope to expand to Park Ave businesses in future volumes if successful.	\$564 (initial run printing and marketing materials)	No	Yes - 2025	Recycling, community engagement	Recommended - \$565
Dommerich Elementary	Blender Bike	Dommerich Elementary's Garden Eco Club proposes purchasing a pedal-powered blender bike to support hands-on learning around renewable energy, nutrition, and sustainability. Students will use the bike to make smoothies with produce grown in the school garden, demonstrating how human energy can replace electricity. The blender bike will be shared across classrooms for lessons, celebrations, and school events, and featured at the school's Earth Day celebration. The project makes sustainability tangible while promoting healthy habits and STEM learning.	\$920 (blender bike with 3 year protection plan)	No	Yes - 2025	Energy, natural resources, community engagement	Recommended - \$920
Edgewater High School	A Plant in Every Classroom and Office	Edgewater High School's "A Plant in Every Classroom and Office" project, led by the Green Team and FFA, will place plants in 100+ classrooms and offices to improve air quality and support student and staff wellness. Students are responsible for plant distribution, care education, and maintenance, while learning about plant science and environmental benefits. Reupposed mugs and planters are used when possible to reduce waste. The project supports campus-wide sustainability goals and aligns with KWPB objectives for resource conservation and community health.	\$1000 (for plant project and other sustainability initiatives at the school like pollinator/food gardens, educational supplies, sustainability incentive items, etc.)	No	Yes - 2025	Local food, water conservation, recycling, energy, natural resources, community engagement	Recommended - \$500
Glenridge Middle School	Harmony Garden	Glenridge Middle School proposes creating a "Harmony Garden," an outdoor learning and reflection space featuring Florida native plants, pollinator habitats, seating, sensory musical elements, and a free seed and plant-cutting lending library. Located adjacent to a public park, the garden will beautify a highly visible campus area while engaging students and the surrounding community in sustainability and environmental stewardship. Over 200 Agriscience students will lead the design, installation, education, and long-term maintenance of the space. The project supports native landscaping, water conservation, pollinator protection, mindfulness, and community engagement, building on a previous KWPB Green Schools grant.	\$1580 (Florida native plants & soil amendments, sensory musical instruments, educational signage, lending library station, bench seating, bee habitat building materials)	No	Yes - 2024	Community engagement, natural resources	Neutral
Howell Branch Academy	Outdoor Activity Center & Retention Pond Restoration	Howell Branch Academy proposes expanding its Learning Garden with an Outdoor Activity Center for creative, garden-based learning while restoring an eroding retention pond through native pollinator plantings. Guided by professional consultations, students and teachers will use the space for curriculum-integrated projects that incorporate recycled materials, gardening, and environmental exploration. Native plant installation will stabilize soil, reduce runoff, and support biodiversity, with students and families participating in the work. The project strengthens existing composting and recycling efforts at the school.	\$1515 (restoring retention pond with natives) \$2158 (Outdoor Activity Center)	Yes	No	Natural resources	Recommended - \$1515
Methodist School for Early Education	Expansion of Vegetable Garden "Kinder-garden"	Methodist School for Early Education has been developing its Outdoor Classroom for the past five years, with its vegetable garden becoming a core part of student learning. The school proposes expanding the garden to include a dedicated "kinder-garden" area, giving older students more space to plant, grow, and harvest vegetables and herbs. This expansion will deepen hands-on education around local food systems and the environmental benefits of growing food. The project builds on existing success, with many participating families now maintaining home gardens of their own.	\$500 (raised beds, soil, vegetable & herb seeds)	No	Yes - 2025, 2024, 2023	Local food	Neutral

Orlando Gifted Academy	Urban Habitat Patch	The school proposes creating an Urban Habitat Patch to transform an underutilized area of campus into a living outdoor classroom. Students in grades 2-8 will plant native species, vegetables, and herbs; build bird and pollinator habitats; and use rain barrels to learn water conservation. The space will support hands-on learning in ecology, biodiversity, sustainable food systems, and urban environmental challenges. Student and families will help maintain the space through service-learning and community planting days, creating a lasting sustainability resource aligned with KWPB&S goals.	\$1500 (native pollinator plants, vegetables & herbs, organic mulch & compost, bird house materials, gardening tools, curriculum materials)	Yes	No	Local food, water conservation, natural resources, community engagement	Recommended - \$1500
Park Maitland South	Soundscape	Park Maitland South proposes creating "Soundscape," a sound and sensory green space for early childhood students featuring interactive musical elements, water features, and drought-tolerant, pollinator-friendly plants such as rosemary. Students will be involved in planning, planting, composting, watering, and maintaining the space, with additional elements like 3-D printed wind spinners created in STEM classes. The project builds on the school's established gardening program and new greenhouse, integrating art, science, and sustainability education. Soundscape will promote sensory learning while teaching water conservation and environmental stewardship.	Ongoing project estimated over \$2000, but requesting \$500 which would "go a long way"	No	Yes - 2025, 2023	Local food, natural resources, community engagement	Neutral
Welbourne Nursery & Preschool	Enhanced Outdoor Learning Space	Welbourne Nursery & Preschool proposes enhancing their outdoor learning spaces in order to create a more welcoming, functional, and environmentally friendly space that encourages outdoor explorations and hands-on learning. Students will be involved in the planning and implementation phase - including input on the outdoor spaces they use daily and assist with planting, watering, campus clean-ups, and learning proper recycling and waste disposal practices. Welbourne aims to embed sustainability and conservation into students everyday learning experience	\$1000 (garden infrastructure like raised beds, soil, mulch, irrigation, native & pollinator-friendly plants, signage, tools)	No	Yes- 2025	Water conservation, recycling, community engagement	Neutral

**Staff Recommendation**

Edgewater High School	\$	500
Audubon Park School	\$	565
Dommerich Elementary School	\$	920
Orlando Gifted Academy	\$	1,500
Howell Branch Academy	\$	1,515
Total	\$	5,000

**KWPB Green Schools Grant Program  
2026 Application**

**1. Applicant Information**

**Today's Date:** December 8th, 2025

**School:** All Saints School

**School Address:** 338 E Lyman Ave

**Principal:** Emory Messeroff (Director)

**Supporting Teacher:** Shari Pridgen (Outdoor Classroom)

**Teacher's Phone #:** 407-644-1737

**Teacher's E-Mail:** [emory@allsaintswinterpark.org](mailto:emory@allsaintswinterpark.org)

**Which of the following Sustainability Topics does your project incorporate?**

- Recycling
- Natural Resources

**2. Project Summary: In one page make the case for why this project is important to your school and why your proposed project will lead to results.**

**1. Background** – *What is the motivation and purpose for the project? Who was involved with identifying a need for this project on the school's campus? (350-word max.)*

All Saints School proposes the installation of an Outdoor Play Kitchen designed to promote hands-on learning and environmental stewardship. We identified a need to expand on our outdoor learning space that encourages imaginative play while reinforcing conservation concepts. Children have a natural curiosity for cooking and nature, and we recognized an opportunity to turn those interests into meaningful, sustainable play. Once the kitchen is built, we plan on using rocks, leaves, dirt and other natural materials to “cook,” play, and interact in our outdoor space. We are committed to creating developmentally appropriate experiences that connect our students to our environment, and we believe adding an Outdoor Play Kitchen will do just that!

**2. Student Involvement** – *Describe student involvement in the planning and implementation of the project. Will this project be tied to any on-campus groups or classes?*

Once the kitchen is built, children will assist with sorting natural items for use in play, painting rocks to create sustainable “food” toys, and planting herbs near the kitchen. The project will be integrated into several on-campus learning experiences, including our Pre-K and Kindergarten science lessons and weekly outdoor classes.

**3. Impact** – *Please describe the project’s impact on the school and/or community. How have students learned and applied practices of sustainability and conservation at school and/or in the community?*

The Outdoor Play Kitchen will strengthen our school’s culture of sustainability by providing daily, tangible opportunities for children to practice conservation habits. Students will learn to reuse materials and how to use natural resources for play rather than focusing on plastic, store-bought items. When children learn to use natural materials in play, they will be able to use those skills at home and show their families the joy of play in outdoor spaces. If we encourage our families to engage in more outdoor play, they will be motivated to take care of our natural world and community!

**4. Sustainability-** *Describe how the project will advance and support the Winter Park SAP objectives? How well does the project outcome support sustainability principles and create a culture of resource conservation at your school?*

Our Outdoor Play Kitchen supports the Winter Park Sustainability Action Plan (SAP) by fostering environmental awareness and promoting waste reduction by using natural materials. The project reduces landfill waste and demonstrates the use of natural materials for play. It will enhance our outdoor learning environment, encouraging daily interaction with nature and instilling lifelong habits of stewardship. Ultimately, the Outdoor Play Kitchen will create a visible and meaningful culture of conservation on our campus, one that begins with our youngest learners and radiates outward into their families and the broader community.

**5. Project Budget-** *Please detail your project budget, how exactly will the money be used? How much money will the project cost? (Capital expense? On-going operations? Both?) Will the school be contributing to the funding if this project?*

We received a quote (photo below) from a local handyman that has completed a few projects for All Saints School in the past. The custom mud kitchen fabrication and installation was quoted at a total of \$4,350. The school will be contributing to the funding of this project with monies raised through our spring 2026 fundraiser.

**Custom Mud Kitchen Fabrication & Installation Service**

\$3,200.00

1

\$3,200.00

Custom-built realistic outdoor mud kitchen measuring approximately 8.6 ft (L) x 24 in (W) x 48 in (H). Includes design, fabrication, and assembly using high-quality exterior-grade materials (weatherproof wood & composite boards). Features countertop workspace, sink area (real sink), built in oven and shelving for storage and play.

Work includes material acquisition, cutting, assembly, sanding, surface preparation, and protective finish application. Includes setup, site delivery, and cleanup upon completion.

**Custom Mud Refrigerator Fabrication Service**

\$1,150.00

1

\$1,150.00

Design and fabrication of a custom outdoor mud refrigerator measuring 24 in (W) x 24 in (D) x 48 in (H). Built entirely by hand with durable, weather-resistant materials to complement the mud kitchen set. Includes functional doors, custom shelving, and realistic detailing to resemble a full-sized refrigerator. Project includes material sourcing, cutting, assembly, finishing, and paint/sealant for outdoor protection.

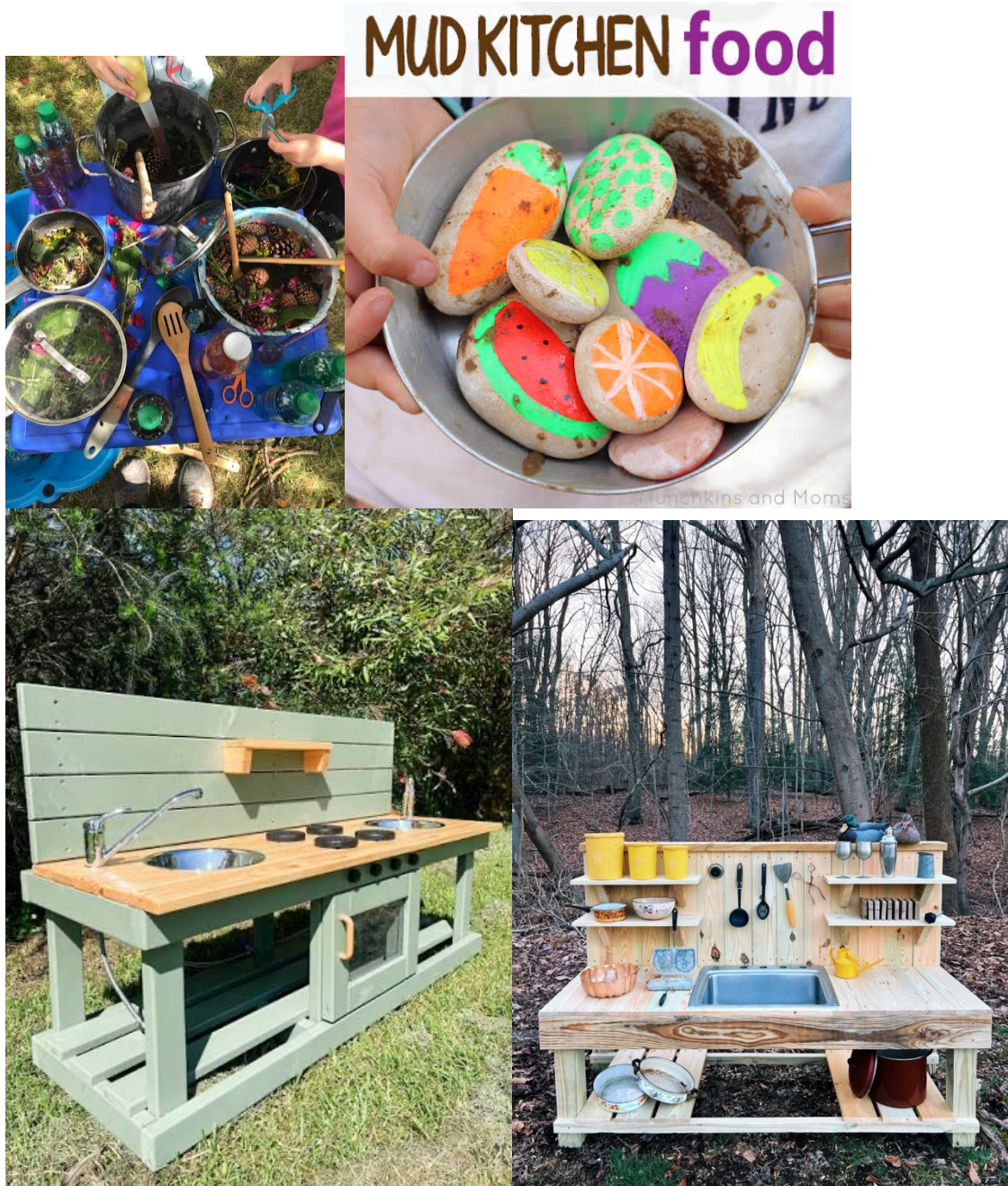
**TOTAL**

**USD \$4,350.00**

This estimate may be subject to changes.

## 6. Supplemental Material

Please include photos, when possible, and/or student statements, when applicable, regarding the project or program and its impact on the school and their knowledge of sustainability and conservation practices.





# Keep Winter Park Beautiful & Sustainable Advisory Board



## Green Schools Grant Program Request for Proposals (RFP)

**Grant Proposal must be submitted by 5:00 p.m. EST on [Wednesday], [December 31, 2025]**  
**\*\*Proposals are to be no more than 2 pages long, not including supporting documentation\*\***

### Purpose

The mission of the City of Winter Park's [Keep Winter Park Beautiful & Sustainable Advisory Board \(KWPB&S\)](#) is to improve the quality, sustainability and aesthetics of our environment in order to create a healthier, more beautiful place to live, work, and play. The purpose of the Green Schools Grant is to support schools serving Winter Park in their efforts to achieve sustainability goals and beautify their campus while engaging and educating students grades K-12 in the practices of sustainability. The program also welcomes strong applications from colleges and universities located within the city limits.

The intent of this RFP is to fund projects that will support the objectives of the [Winter Park Sustainability Action Plan \(SAP\)](#), focusing on one or more of the following SAP categories:

- Buildings, Energy, & Water
- Community Engagement & Green Economy
- Local Food & Agriculture
- Mobility and Urban Form
- Natural Systems & Resources
- Waste Diversion & Recycling

Project focus areas could include: water conservation, reducing energy use, waste diversion, green buildings, local food, or transportation.

Examples of past projects include: implementing pollinator or food gardens, creating or expanding recycling programs, creating natural centers, and installing water bottle filling stations.

Other project ideas are posted on our [website](#) for inspiration.

### Benefits

- Reinforces conservation and sustainability education efforts at our local schools
- Supports mission and goals of Keep Winter Park Beautiful & Sustainable
- Builds community relations and stimulates civic engagement

### Funding

The 2026 Green Schools Grant Program has up to \$5,000 available in funding. Keep Winter Park Beautiful & Sustainable Board members will determine the distribution and amount of awarded funds. Grants will be disbursed by **February 11, 2026** to chosen applicants.

## Eligibility Requirements

Pre-K through 12 public and private schools serving students who live in Winter Park. The program also welcomes strong applications from colleges and universities located within the city limits.

Please note that for your project to be eligible, it must be a **NEW** idea, project, or scope than what you have submitted in the past.

## Grant Selection and Scoring Criteria

- **Physical and cultural impact:** How impactful will the proposed project outcomes be for the school campus and greater community? How will the project impact the mindset of the school's population in terms of sustainability?
- **Student involvement and curriculum integration:** What is the extent of student and educator involvement? How will this project add to existing school wide sustainability efforts?
- **Sustainability and natural resources:** How well will the project align with the objectives outlined in Winter Park's SAP? How will the project's outcome support sustainability principles and promote resource conservation?

## Application Guidelines

**The grant application provided on the next page, and any supporting materials must be submitted by 5:00 p.m. EST on, December 31, 2025 electronically to [kwpb@cityofwinterpark.org](mailto:kwpb@cityofwinterpark.org). Submissions should be in Microsoft Word or PDF format.**

## Reporting Requirements

1. Grant recipients will be required to capture and share with the City of Winter Park aspects of their project in ways that are relatable/instructive to the general public. This can be accomplished in one of two ways. Submission of one of the following is required:
  - a. Grantees may prepare a video which showcases their project for the Keep Winter Park Beautiful and Sustainable Advisory Board. This can either be a slideshow of photos or a more creative presentation of the project and its impact. Videos must be less than one minute in length. Or,
  - b. Grantees may prepare a photo essay showcasing their project. This would include no less than 10 photographs with captions describing what is being demonstrated.
2. Grant recipients must submit one of the two submission options prior to **Wednesday, June 3, 2026**.
3. Grant recipients have the opportunity to present in person with or without class to the KWPB&S Board on **Tuesday, June 16, 2026**.
4. Failure to meet reporting requirements may result in ineligibility to apply for future KWPB&S grant opportunities.

## Questions

Contact us at [kwpb@cityofwinterpark.org](mailto:kwpb@cityofwinterpark.org) or 407.599.3479 with any questions.

## Helpful Links

Winter Park Green Schools Grants Page: [cityofwinterpark.org/greenschools](http://cityofwinterpark.org/greenschools)

Winter Park Sustainability Action Plan (SAP): [cityofwinterpark.org/sustainability](http://cityofwinterpark.org/sustainability)

## Important Dates

<b>December 31, 2025</b>	Grant Application Submission Due by 5:00 p.m. EST
<b>January 28, 2026</b>	Grant Recipients Notified
<b>February 11, 2026</b>	Grant Checks Delivered to Recipients
<b>2026 Earth Day Celebration</b>	Grant Recipients Receive Certificate at 2026 Earth Day Celebration
<b>June 3, 2026</b>	Storytelling Submission Due (see <i>Grant Reporting Requirements</i> )
<b>June 16, 2026</b>	Grant Recipients Present Project to KWPB&S Board ( <i>Optional</i> )

# KWPB Green Schools Grant Program 2026 Application

**DUE: Wednesday, December 31, 2025, at 5 p.m. EST**

Please submit your application with responses to these questions in the order outlined below. Grant applications, not including supporting documentation, are to be no more than two pages in length in Microsoft Word or PDF format. **The deadline to submit a grant application is 5:00 p.m. EST on Wednesday, December 31, 2025. Please submit your completed application and supporting documents electronically to [kwpb@cityofwinterpark.org](mailto:kwpb@cityofwinterpark.org).**

## 1. Applicant Information

<b>Today's Date:</b>	
<b>School:</b>	
<b>School Address:</b>	
<b>Principal:</b>	
<b>Sponsoring Teacher:</b>	
<b>Teacher's Phone #:</b>	
<b>Teacher's E-Mail:</b>	

### Which of the following Sustainability Topics does your project incorporate?

- |   |   |
|---|---|
| <input type="checkbox"/> Local Food         | <input type="checkbox"/> Energy               |
| <input type="checkbox"/> Water Conservation | <input type="checkbox"/> Natural Resources    |
| <input type="checkbox"/> Recycling          | <input type="checkbox"/> Community Engagement |
| <input type="checkbox"/> Other:             |   |

**2. Project Summary: In one page, make the case for why this project is important to your school and why your proposed project will lead to results.**

1. **Background** – What is the motivation and purpose for the project? Who was involved with identifying a need for this project on the school's campus? (350-word max.)

2. **Student Involvement** – Describe student involvement in the planning and implementation of the project. Will this project be tied to any on-campus groups or classes? (350-word max.)

3. **Impact** – Please describe the project's impact on the school and/or community. How have students learned and applied practices of sustainability and conservation at school and/or in the community?

4. **Sustainability**- Describe how the project will advance and support the Winter Park SAP objectives? How well does the project outcome support sustainability principles and create a culture of resource conservation at your school?

5. **Project Budget-** Please detail your project budget, how exactly will the money be used? How much money will the project cost? (Capital expense? On-going operations? Both?) Will the school be contributing to the funding of this project?

### 3. Supplemental Material

Please include photos, when possible, and/or student statements, when applicable, regarding the project or program and its impact on the school and their knowledge of sustainability and conservation practices.

# Keep Winter Park Beautiful & Sustainable Advisory Board



## Green Schools Grant Program Request for Proposals (RFP)

**Grant Proposal must be submitted by 5:00 p.m. EST on [Wednesday], [December 31, 2025]**  
**\*\*Proposals are to be no more than 2 pages long, not including supporting documentation\*\***

### Purpose

The mission of the City of Winter Park's [Keep Winter Park Beautiful & Sustainable Advisory Board \(KWPB&S\)](#) is to improve the quality, sustainability and aesthetics of our environment in order to create a healthier, more beautiful place to live, work, and play. The purpose of the Green Schools Grant is to support schools serving Winter Park in their efforts to achieve sustainability goals and beautify their campus while engaging and educating students grades K-12 in the practices of sustainability. The program also welcomes strong applications from colleges and universities located within the city limits.

The intent of this RFP is to fund projects that will support the objectives of the [Winter Park Sustainability Action Plan \(SAP\)](#), focusing on one or more of the following SAP categories:

- Buildings, Energy, & Water
- Community Engagement & Green Economy
- Local Food & Agriculture
- Mobility and Urban Form
- Natural Systems & Resources
- Waste Diversion & Recycling

Project focus areas could include: water conservation, reducing energy use, waste diversion, green buildings, local food, or transportation.

Examples of past projects include: implementing pollinator or food gardens, creating or expanding recycling programs, creating natural centers, and installing water bottle filling stations.

Other project ideas are posted on our [website](#) for inspiration.

### Benefits

- Reinforces conservation and sustainability education efforts at our local schools
- Supports mission and goals of Keep Winter Park Beautiful & Sustainable
- Builds community relations and stimulates civic engagement

### Funding

The 2026 Green Schools Grant Program has up to \$5,000 available in funding. Keep Winter Park Beautiful & Sustainable Board members will determine the distribution and amount of awarded funds. Grants will be disbursed by **February 11, 2026** to chosen applicants.

## Eligibility Requirements

Pre-K through 12 public and private schools serving students who live in Winter Park. The program also welcomes strong applications from colleges and universities located within the city limits.

Please note that for your project to be eligible, it must be a **NEW** idea, project, or scope than what you have submitted in the past.

## Grant Selection and Scoring Criteria

- **Physical and cultural impact:** How impactful will the proposed project outcomes be for the school campus and greater community? How will the project impact the mindset of the school's population in terms of sustainability?
- **Student involvement and curriculum integration:** What is the extent of student and educator involvement? How will this project add to existing school wide sustainability efforts?
- **Sustainability and natural resources:** How well will the project align with the objectives outlined in Winter Park's SAP? How will the project's outcome support sustainability principles and promote resource conservation?

## Application Guidelines

**The grant application provided on the next page, and any supporting materials must be submitted by 5:00 p.m. EST on, December 31, 2025 electronically to [kwpb@cityofwinterpark.org](mailto:kwpb@cityofwinterpark.org). Submissions should be in Microsoft Word or PDF format.**

## Reporting Requirements

1. Grant recipients will be required to capture and share with the City of Winter Park aspects of their project in ways that are relatable/instructive to the general public. This can be accomplished in one of two ways. Submission of one of the following is required:
  - a. Grantees may prepare a video which showcases their project for the Keep Winter Park Beautiful and Sustainable Advisory Board. This can either be a slideshow of photos or a more creative presentation of the project and its impact. Videos must be less than one minute in length. Or,
  - b. Grantees may prepare a photo essay showcasing their project. This would include no less than 10 photographs with captions describing what is being demonstrated.
2. Grant recipients must submit one of the two submission options prior to **Wednesday, June 3, 2026**.
3. Grant recipients have the opportunity to present in person with or without class to the KWPB&S Board on **Tuesday, June 16, 2026**.
4. Failure to meet reporting requirements may result in ineligibility to apply for future KWPB&S grant opportunities.

## Questions

Contact us at [kwpb@cityofwinterpark.org](mailto:kwpb@cityofwinterpark.org) or 407.599.3479 with any questions.

## Helpful Links

Winter Park Green Schools Grants Page: [cityofwinterpark.org/greenschools](http://cityofwinterpark.org/greenschools)

Winter Park Sustainability Action Plan (SAP): [cityofwinterpark.org/sustainability](http://cityofwinterpark.org/sustainability)

## Important Dates

<b>December 31, 2025</b>	Grant Application Submission Due by 5:00 p.m. EST
<b>January 28, 2026</b>	Grant Recipients Notified
<b>February 11, 2026</b>	Grant Checks Delivered to Recipients
<b>2026 Earth Day Celebration</b>	Grant Recipients Receive Certificate at 2026 Earth Day Celebration
<b>June 3, 2026</b>	Storytelling Submission Due (see <i>Grant Reporting Requirements</i> )
<b>June 16, 2026</b>	Grant Recipients Present Project to KWPB&S Board ( <i>Optional</i> )

# KWPB Green Schools Grant Program 2026 Application

**DUE: Wednesday, December 31, 2025, at 5 p.m. EST**

Please submit your application with responses to these questions in the order outlined below. Grant applications, not including supporting documentation, are to be no more than two pages in length in Microsoft Word or PDF format. **The deadline to submit a grant application is 5:00 p.m. EST on Wednesday, December 31, 2025. Please submit your completed application and supporting documents electronically to [kwpb@cityofwinterpark.org](mailto:kwpb@cityofwinterpark.org).**

## 1. Applicant Information

<b>Today's Date:</b>	December 29, 2025
<b>School:</b>	Dommerich Elementary
<b>School Address:</b>	601 N Thistle Ln, Maitland FL 32751
<b>Principal:</b>	Dr. Janet Martin
<b>Sponsoring Teacher:</b>	Mrs. Eva Manzo
<b>Teacher's Phone #:</b>	407-821-0596
<b>Teacher's E-Mail:</b>	eva.manzo@ocps.net

### Which of the following Sustainability Topics does your project incorporate?

- |   |  |
|---|--|
| <input type="checkbox"/> Local Food         | <input checked="" type="checkbox"/> Energy               |
| <input type="checkbox"/> Water Conservation | <input checked="" type="checkbox"/> Natural Resources    |
| <input type="checkbox"/> Recycling          | <input checked="" type="checkbox"/> Community Engagement |
| <input checked="" type="checkbox"/> Other:  |  |

**2. Project Summary: In one page, make the case for why this project is important to your school and why your proposed project will lead to results.**

1. **Background** – What is the motivation and purpose for the project? Who was involved with identifying a need for this project on the school's campus? (350-word max.)

When it comes to student celebrations they can be a bit repetitive with a craft and a sugary snack. Now imagine walking into a class and they are cheering on each other as they take a ride on a blender bike. With each stride their confidence is thriving and their classmates excited in anticipation for the smoothie that awaits their hard work. At Dommerich we have over 150 students in our Garden Eco Club. Our students are yearning to live a healthy and more sustainable lifestyle and the blender bike is the perfect motivator to keep them racing forward.

2. **Student Involvement** – Describe student involvement in the planning and implementation of the project. Will this project be tied to any on-campus groups or classes? (350-word max.)

The Garden Eco Club will manage and be responsible for the blender bike. We will use it at our monthly meetings to create smoothies from our garden. The Garden Eco Club will lend it out to classes for parties, celebrations, lessons and school functions. We will be most excited to show it off to the community at our annual Family Garden Day (Earth Day Celebration). Parents and community members will have an opportunity to see the kids in action creating their own smoothies all powered on kid energy.

3. **Impact** – Please describe the project's impact on the school and/or community. How have students learned and applied practices of sustainability and conservation at school and/or in the community?

Students will be amazed that they are the energy source behind the blender. This is hands on STEM learning at it's best. It demonstrates energy conservation, teaches physics concepts, and supports engineering and design thinking through real world application. It connects nutrition lessons and renewable energy. The lessons teachers and clubs can use the bike for are endless.

4. **Sustainability**- Describe how the project will advance and support the Winter Park SAP objectives? How well does the project outcome support sustainability principles and create a culture of resource conservation at your school?

The blender bike supports sustainability in the way that it doesn't need electricity. It makes sustainability tangible. It shows that energy has a cost and source. Mostly, it reinforces eco-friendly habits and a climate responsibility for generations to come to enjoy. Students will have a core memory of their turn on the blender bike at Dommerich.

5. **Project Budget-** Please detail your project budget, how exactly will the money be used? How much money will the project cost? (Capital expense? On-going operations? Both?) Will the school be contributing to the funding of this project?

The project cost is \$920. This includes the blender bike that is made for youth ages 6-15 years old with a 3 year protection plan. Our Garden Eco Club will take on any other cosmetic or maintenance issues after that.

### 3. Supplemental Material

Please include photos, when possible, and/or student statements, when applicable, regarding the project or program and its impact on the school and their knowledge of sustainability and conservation practices.

# Size Reference Suitable For 6-15 Age Kids



**Appropriate  
Height:48"-67"**



**Suggested Age  
:6-15 years old**



**Maxload  
:120kg**



**Wheel Size  
:20"**

# Blender More, Enjoy More



**Ice and  
Frozen Fruits**



**Juices**



**MilkShakes**



**1.2L+1.8L set**



**Healthy  
Smoothies**



**Zesty  
Margaritas**



**Creamy  
Hummus**

# Keep Winter Park Beautiful & Sustainable Advisory Board



## Green Schools Grant Program Request for Proposals (RFP)

**Grant Proposal must be submitted by 5:00 p.m. EST on [Wednesday], [December 31, 2025]**  
**\*\*Proposals are to be no more than 2 pages long, not including supporting documentation\*\***

### Purpose

The mission of the City of Winter Park's [Keep Winter Park Beautiful & Sustainable Advisory Board \(KWPB&S\)](#) is to improve the quality, sustainability and aesthetics of our environment in order to create a healthier, more beautiful place to live, work, and play. The purpose of the Green Schools Grant is to support schools serving Winter Park in their efforts to achieve sustainability goals and beautify their campus while engaging and educating students grades K-12 in the practices of sustainability. The program also welcomes strong applications from colleges and universities located within the city limits.

The intent of this RFP is to fund projects that will support the objectives of the [Winter Park Sustainability Action Plan \(SAP\)](#), focusing on one or more of the following SAP categories:

- Buildings, Energy, & Water
- Community Engagement & Green Economy
- Local Food & Agriculture
- Mobility and Urban Form
- Natural Systems & Resources
- Waste Diversion & Recycling

Project focus areas could include: water conservation, reducing energy use, waste diversion, green buildings, local food, or transportation.

Examples of past projects include: implementing pollinator or food gardens, creating or expanding recycling programs, creating natural centers, and installing water bottle filling stations.

Other project ideas are posted on our [website](#) for inspiration.

### Benefits

- Reinforces conservation and sustainability education efforts at our local schools
- Supports mission and goals of Keep Winter Park Beautiful & Sustainable
- Builds community relations and stimulates civic engagement

### Funding

The 2026 Green Schools Grant Program has up to \$5,000 available in funding. Keep Winter Park Beautiful & Sustainable Board members will determine the distribution and amount of awarded funds. Grants will be disbursed by **February 11, 2026** to chosen applicants.

## Eligibility Requirements

Pre-K through 12 public and private schools serving students who live in Winter Park. The program also welcomes strong applications from colleges and universities located within the city limits.

Please note that for your project to be eligible, it must be a **NEW** idea, project, or scope than what you have submitted in the past.

## Grant Selection and Scoring Criteria

- **Physical and cultural impact:** How impactful will the proposed project outcomes be for the school campus and greater community? How will the project impact the mindset of the school's population in terms of sustainability?
- **Student involvement and curriculum integration:** What is the extent of student and educator involvement? How will this project add to existing school wide sustainability efforts?
- **Sustainability and natural resources:** How well will the project align with the objectives outlined in Winter Park's SAP? How will the project's outcome support sustainability principles and promote resource conservation?

## Application Guidelines

**The grant application provided on the next page, and any supporting materials must be submitted by 5:00 p.m. EST on, December 31, 2025 electronically to [kwpb@cityofwinterpark.org](mailto:kwpb@cityofwinterpark.org). Submissions should be in Microsoft Word or PDF format.**

## Reporting Requirements

1. Grant recipients will be required to capture and share with the City of Winter Park aspects of their project in ways that are relatable/instructive to the general public. This can be accomplished in one of two ways. Submission of one of the following is required:
  - a. Grantees may prepare a video which showcases their project for the Keep Winter Park Beautiful and Sustainable Advisory Board. This can either be a slideshow of photos or a more creative presentation of the project and its impact. Videos must be less than one minute in length. Or,
  - b. Grantees may prepare a photo essay showcasing their project. This would include no less than 10 photographs with captions describing what is being demonstrated.
2. Grant recipients must submit one of the two submission options prior to **Wednesday, June 3, 2026**.
3. Grant recipients have the opportunity to present in person with or without class to the KWPB&S Board on **Tuesday, June 16, 2026**.
4. Failure to meet reporting requirements may result in ineligibility to apply for future KWPB&S grant opportunities.

## Questions

Contact us at [kwpb@cityofwinterpark.org](mailto:kwpb@cityofwinterpark.org) or 407.599.3479 with any questions.

## Helpful Links

Winter Park Green Schools Grants Page: [cityofwinterpark.org/greenschools](http://cityofwinterpark.org/greenschools)

Winter Park Sustainability Action Plan (SAP): [cityofwinterpark.org/sustainability](http://cityofwinterpark.org/sustainability)

## Important Dates

<b>December 31, 2025</b>	Grant Application Submission Due by 5:00 p.m. EST
<b>January 28, 2026</b>	Grant Recipients Notified
<b>February 11, 2026</b>	Grant Checks Delivered to Recipients
<b>2026 Earth Day Celebration</b>	Grant Recipients Receive Certificate at 2026 Earth Day Celebration
<b>June 3, 2026</b>	Storytelling Submission Due (see <i>Grant Reporting Requirements</i> )
<b>June 16, 2026</b>	Grant Recipients Present Project to KWPB&S Board ( <i>Optional</i> )

# KWPB Green Schools Grant Program 2026 Application

**DUE: Wednesday, December 31, 2025, at 5 p.m. EST**

Please submit your application with responses to these questions in the order outlined below. Grant applications, not including supporting documentation, are to be no more than two pages in length in Microsoft Word or PDF format. **The deadline to submit a grant application is 5:00 p.m. EST on Wednesday, December 31, 2025. Please submit your completed application and supporting documents electronically to [kwpb@cityofwinterpark.org](mailto:kwpb@cityofwinterpark.org).**

## 1. Applicant Information

<b>Today's Date:</b>	
<b>School:</b>	
<b>School Address:</b>	
<b>Principal:</b>	
<b>Sponsoring Teacher:</b>	
<b>Teacher's Phone #:</b>	
<b>Teacher's E-Mail:</b>	

### Which of the following Sustainability Topics does your project incorporate?

- |   |   |
|---|---|
| <input type="checkbox"/> Local Food         | <input type="checkbox"/> Energy               |
| <input type="checkbox"/> Water Conservation | <input type="checkbox"/> Natural Resources    |
| <input type="checkbox"/> Recycling          | <input type="checkbox"/> Community Engagement |
| <input type="checkbox"/> Other:             |   |

**2. Project Summary: In one page, make the case for why this project is important to your school and why your proposed project will lead to results.**

1. **Background** – What is the motivation and purpose for the project? Who was involved with identifying a need for this project on the school's campus? (350-word max.)

2. **Student Involvement** – Describe student involvement in the planning and implementation of the project. Will this project be tied to any on-campus groups or classes? (350-word max.)

3. **Impact** – Please describe the project's impact on the school and/or community. How have students learned and applied practices of sustainability and conservation at school and/or in the community?

4. **Sustainability**- Describe how the project will advance and support the Winter Park SAP objectives? How well does the project outcome support sustainability principles and create a culture of resource conservation at your school?

5. **Project Budget-** Please detail your project budget, how exactly will the money be used? How much money will the project cost? (Capital expense? On-going operations? Both?) Will the school be contributing to the funding of this project?

**3. Supplemental Material**

Please include photos, when possible, and/or student statements, when applicable, regarding the project or program and its impact on the school and their knowledge of sustainability and conservation practices.

# A Plant in Every EHS Classroom & Office



**Sustainably  
brought to you  
by the Green  
Team, Recycling  
Squad, and FFA.**



**2025-2026  
Rollout**

Today's Date: 12/15/25  
School: Glenridge Middle School  
School Address: 2900 Upper Park Road, Orlando, FL 32814  
Principal: Daniel Kempinger  
Sponsoring Teacher: Janet Glenn  
Teacher's Phone # (407)623-1415, ext. 5072275  
Teacher's E-Mail: [janet.glenn@ocps.net](mailto:janet.glenn@ocps.net)

**Project Summary** – “Harmony Garden” Sustainability Topics: Community Engagement, Natural Resources  
The Harmony Garden project directly supports the City of Winter Park’s Keep Winter Park Beautiful & Sustainable mission by fostering mindful interaction with nature while creating sustained opportunities for shared learning and engagement between students and the wider community.

Students will create a welcoming outdoor garden space (adjacent to a public park serving Winter Park residents) focused on Florida native plants, outdoor sensory and musical elements (such as a metallophone, vertical xylophone, wind chimes, or resonant bell/gong), a free seed and plant-cutting lending library, bench seating, pollinator and bee habitat structures, and educational signage identifying native plants and sustainability concepts. The garden will serve as both a welcoming instructional outdoor classroom and a reflection of Winter Park’s commitment to beauty, sustainability, and environmental stewardship. Our goals are to beautify the school campus (which is visible from adjacent public park) using Florida-friendly plants; educate and engage students and the community in hands-on sustainability practices and environmental stewardship; encourage mindfulness, emotional regulation, and mental wellness through interaction with nature; and strengthen community engagement among students, families, and neighborhood residents.

**Background** - Research shows that access to green spaces and opportunities for mindful interaction with nature improve well-being, focus, and emotional regulation. As a school serving Winter Park families, the Harmony Garden project responds to the city’s sustainability goals by integrating native landscaping, pollinator support, sensory enhancement, and environmental education into a highly visible campus space. During this academic year, teachers of Glenridge’s special education students have increasingly escorted their students into the identified outdoor space. Observing the enjoyment of our special education students, we’re inspired to pursue garden improvements to extend the benefits for school and neighborhood members. Students in the Agriscience course learn through classroom and hands-on activities. This unique, science-based course is completely self-funded through parent and community support. Neither Orange County Public Schools nor Glenridge Middle School provides funds for materials, equipment, etc.

**Student Involvement** - Agriscience students (210+ students in grades 6-8) will actively participate in all aspects of the project, including:

- Researching Florida native plants, pollinator species, and sustainable landscaping practices aligned with local ecosystems and Winter Park sustainability goals
- Designing and planting garden, choosing sensory musical and mindfulness elements, and designing signage for plant identification and sustainability
- Building bee habitats, free lending library and determining what materials will be offered and how the library will be maintained and shared with the community
- Managing the seed and plant cutting lending library

Garden stewardship student teams will be responsible for garden maintenance, monitoring pollinator activity, replenishing the seed library, and leading peer and community education efforts. Reflection activities, journaling, and mindfulness practices will be incorporated into class time, reinforcing the garden’s role as a living classroom that supports STEM learning, civic responsibility, environmental literacy, sustainability education, campus beautification, and student well-being. This sustained student leadership ensures the project remains an active, evolving resource rather than a one-time installation.

**Impact** – The permanent green space garden will have a lasting impact on students, the school campus, and the broader Winter Park community by supporting sustainability education, campus beautification, and student well-being. Students will deepen their understanding of Florida native plants, pollinators, and ecological systems through hands-on stewardship, while also developing leadership, collaboration, and environmental responsibility. The integration of sensory musical elements, seating, and mindfulness-focused design will provide daily opportunities for calm reflection, creative expression, and emotional regulation,

supporting positive mental and emotional well-being. The free seed and plant-cutting lending library will extend the garden's impact beyond campus by encouraging sustainable gardening practices at home and strengthening community connections. Together, these elements will foster a culture of environmental stewardship, enhance community engagement, and serve as a replicable model for how school-based sustainability projects can create meaningful educational and social impact.

Our proposed Harmony Garden would be the next step in a long-term vision that began with a Keep Winter Park Beautiful Green Schools grant two years ago, when we received a grant to install a raised vegetable garden and some pollinator plants.

### **Sustainability-**

The destination school garden is designed for long-term sustainability through the intentional use of Florida native and drought-tolerant plants that require minimal irrigation and maintenance, supporting water conservation and resilient landscapes. Durable outdoor musical elements and the use of recycled or reused materials where possible will ensure longevity and responsible resource use. Ongoing student stewardship teams, embedded within existing classes and student groups, will be responsible for maintaining the garden, replenishing the free seed and plant-cutting lending library, monitoring pollinator habitats, and updating signage as needed. The garden will be integrated into curriculum, school events, and sustainability initiatives such as Earth Week and service-learning activities, ensuring continued educational relevance and community engagement. These strategies ensure the project remains a vibrant, evolving resource that continues to beautify the campus, support environmental education, and align with the City of Winter Park's sustainability goals well beyond the grant period.

### **Project Budget**

\$375 Florida Native plants & soil amendments

The estimate is based on approximately 40 native plants from local providers, including Muhly grass, Tropical sage, Pineland heliotrope, St. John Wort, Tickseed, Green Eyes, Lanceleaf, Lantana, Lopsided Indian Grass. Giant ironweed and others. Soil amendments include peat moss, Black Kow, and worm castings.

\$420 Large outdoor sensory musical elements

Large windbell \$160-180, <https://chimes.com/collections/bells-gongs>

Garden Bells \$76-96 <https://chimes.com/collections/bells-gongs/products/dcgb>

Wind chimes \$134-144 <https://chimes.com/collections/deep-toned>

\$140 Educational & interpretive signage\*\*

<https://www.signsonthecheap.com/community-signs>

\$135 Free lending library station (weatherproof)\*\*

\$390 Bench seating

3 Cast concrete benches

<https://www.homedepot.com/pep/Athens-Stonecasting-Old-World-Concrete-Garden-Bench-01->

\$120 Bee habitat building materials

\*\*We will use low cost, found and recycled materials as much as possible.

\$1580 Total Requested

Most of the above costs represent a one-time expense.

Ongoing expenses include periodic replacement of native plants and soil amendment. Plant replacement can be accomplished by teaching students to propagate new plants or by petitioning PTSA for financial support. Glenridge would welcome and appreciate a grant support of any amount. If we receive a grant smaller than the outlined budget request, we will apply the funds to the items above in the order listed.

# Keep Winter Park Beautiful & Sustainable Advisory Board



## Green Schools Grant Program Request for Proposals (RFP)

**Grant Proposal must be submitted by 5:00 p.m. EST on [Wednesday], [December 31, 2025]**  
**\*\*Proposals are to be no more than 2 pages long, not including supporting documentation\*\***

### Purpose

The mission of the City of Winter Park's [Keep Winter Park Beautiful & Sustainable Advisory Board \(KWPB&S\)](#) is to improve the quality, sustainability and aesthetics of our environment in order to create a healthier, more beautiful place to live, work, and play. The purpose of the Green Schools Grant is to support schools serving Winter Park in their efforts to achieve sustainability goals and beautify their campus while engaging and educating students grades K-12 in the practices of sustainability. The program also welcomes strong applications from colleges and universities located within the city limits.

The intent of this RFP is to fund projects that will support the objectives of the [Winter Park Sustainability Action Plan \(SAP\)](#), focusing on one or more of the following SAP categories:

- Buildings, Energy, & Water
- Community Engagement & Green Economy
- Local Food & Agriculture
- Mobility and Urban Form
- Natural Systems & Resources
- Waste Diversion & Recycling

Project focus areas could include: water conservation, reducing energy use, waste diversion, green buildings, local food, or transportation.

Examples of past projects include: implementing pollinator or food gardens, creating or expanding recycling programs, creating natural centers, and installing water bottle filling stations.

Other project ideas are posted on our [website](#) for inspiration.

### Benefits

- Reinforces conservation and sustainability education efforts at our local schools
- Supports mission and goals of Keep Winter Park Beautiful & Sustainable
- Builds community relations and stimulates civic engagement

### Funding

The 2026 Green Schools Grant Program has up to \$5,000 available in funding. Keep Winter Park Beautiful & Sustainable Board members will determine the distribution and amount of awarded funds. Grants will be disbursed by **February 11, 2026** to chosen applicants.

## Eligibility Requirements

Pre-K through 12 public and private schools serving students who live in Winter Park. The program also welcomes strong applications from colleges and universities located within the city limits.

Please note that for your project to be eligible, it must be a **NEW** idea, project, or scope than what you have submitted in the past.

## Grant Selection and Scoring Criteria

- **Physical and cultural impact:** How impactful will the proposed project outcomes be for the school campus and greater community? How will the project impact the mindset of the school's population in terms of sustainability?
- **Student involvement and curriculum integration:** What is the extent of student and educator involvement? How will this project add to existing school wide sustainability efforts?
- **Sustainability and natural resources:** How well will the project align with the objectives outlined in Winter Park's SAP? How will the project's outcome support sustainability principles and promote resource conservation?

## Application Guidelines

**The grant application provided on the next page, and any supporting materials must be submitted by 5:00 p.m. EST on, December 31, 2025 electronically to [kwpb@cityofwinterpark.org](mailto:kwpb@cityofwinterpark.org). Submissions should be in Microsoft Word or PDF format.**

## Reporting Requirements

1. Grant recipients will be required to capture and share with the City of Winter Park aspects of their project in ways that are relatable/instructive to the general public. This can be accomplished in one of two ways. Submission of one of the following is required:
  - a. Grantees may prepare a video which showcases their project for the Keep Winter Park Beautiful and Sustainable Advisory Board. This can either be a slideshow of photos or a more creative presentation of the project and its impact. Videos must be less than one minute in length. Or,
  - b. Grantees may prepare a photo essay showcasing their project. This would include no less than 10 photographs with captions describing what is being demonstrated.
2. Grant recipients must submit one of the two submission options prior to **Wednesday, June 3, 2026**.
3. Grant recipients have the opportunity to present in person with or without class to the KWPB&S Board on **Tuesday, June 16, 2026**.
4. Failure to meet reporting requirements may result in ineligibility to apply for future KWPB&S grant opportunities.

## Questions

Contact us at [kwpb@cityofwinterpark.org](mailto:kwpb@cityofwinterpark.org) or 407.599.3479 with any questions.

## Helpful Links

Winter Park Green Schools Grants Page: [cityofwinterpark.org/greenschools](http://cityofwinterpark.org/greenschools)

Winter Park Sustainability Action Plan (SAP): [cityofwinterpark.org/sustainability](http://cityofwinterpark.org/sustainability)

## Important Dates

<b>December 31, 2025</b>	Grant Application Submission Due by 5:00 p.m. EST
<b>January 28, 2026</b>	Grant Recipients Notified
<b>February 11, 2026</b>	Grant Checks Delivered to Recipients
<b>2026 Earth Day Celebration</b>	Grant Recipients Receive Certificate at 2026 Earth Day Celebration
<b>June 3, 2026</b>	Storytelling Submission Due (see <i>Grant Reporting Requirements</i> )
<b>June 16, 2026</b>	Grant Recipients Present Project to KWPB&S Board ( <i>Optional</i> )

# KWPB Green Schools Grant Program 2026 Application

**DUE: Wednesday, December 31, 2025, at 5 p.m. EST**

Please submit your application with responses to these questions in the order outlined below. Grant applications, not including supporting documentation, are to be no more than two pages in length in Microsoft Word or PDF format. **The deadline to submit a grant application is 5:00 p.m. EST on Wednesday, December 31, 2025. Please submit your completed application and supporting documents electronically to [kwpb@cityofwinterpark.org](mailto:kwpb@cityofwinterpark.org).**

## 1. Applicant Information

<b>Today's Date:</b>	
<b>School:</b>	
<b>School Address:</b>	
<b>Principal:</b>	
<b>Sponsoring Teacher:</b>	
<b>Teacher's Phone #:</b>	
<b>Teacher's E-Mail:</b>	

### Which of the following Sustainability Topics does your project incorporate?

- |   |   |
|---|---|
| <input type="checkbox"/> Local Food         | <input type="checkbox"/> Energy               |
| <input type="checkbox"/> Water Conservation | <input type="checkbox"/> Natural Resources    |
| <input type="checkbox"/> Recycling          | <input type="checkbox"/> Community Engagement |
| <input type="checkbox"/> Other:             |   |

**2. Project Summary: In one page, make the case for why this project is important to your school and why your proposed project will lead to results.**

1. **Background** – What is the motivation and purpose for the project? Who was involved with identifying a need for this project on the school's campus? (350-word max.)

2. **Student Involvement** – Describe student involvement in the planning and implementation of the project. Will this project be tied to any on-campus groups or classes? (350-word max.)

3. **Impact** – Please describe the project's impact on the school and/or community. How have students learned and applied practices of sustainability and conservation at school and/or in the community?

4. **Sustainability**- Describe how the project will advance and support the Winter Park SAP objectives? How well does the project outcome support sustainability principles and create a culture of resource conservation at your school?

5. **Project Budget-** Please detail your project budget, how exactly will the money be used? How much money will the project cost? (Capital expense? On-going operations? Both?) Will the school be contributing to the funding of this project?

### 3. Supplemental Material

Please include photos, when possible, and/or student statements, when applicable, regarding the project or program and its impact on the school and their knowledge of sustainability and conservation practices.



# Keep Winter Park Beautiful & Sustainable Advisory Board



## Green Schools Grant Program Request for Proposals (RFP)

**Grant Proposal must be submitted by 5:00 p.m. EST on [Wednesday], [December 31, 2025]**  
**\*\*Proposals are to be no more than 2 pages long, not including supporting documentation\*\***

### Purpose

The mission of the City of Winter Park's [Keep Winter Park Beautiful & Sustainable Advisory Board \(KWPB&S\)](#) is to improve the quality, sustainability and aesthetics of our environment in order to create a healthier, more beautiful place to live, work, and play. The purpose of the Green Schools Grant is to support schools serving Winter Park in their efforts to achieve sustainability goals and beautify their campus while engaging and educating students grades K-12 in the practices of sustainability. The program also welcomes strong applications from colleges and universities located within the city limits.

The intent of this RFP is to fund projects that will support the objectives of the [Winter Park Sustainability Action Plan \(SAP\)](#), focusing on one or more of the following SAP categories:

- Buildings, Energy, & Water
- Community Engagement & Green Economy
- Local Food & Agriculture
- Mobility and Urban Form
- Natural Systems & Resources
- Waste Diversion & Recycling

Project focus areas could include: water conservation, reducing energy use, waste diversion, green buildings, local food, or transportation.

Examples of past projects include: implementing pollinator or food gardens, creating or expanding recycling programs, creating natural centers, and installing water bottle filling stations.

Other project ideas are posted on our [website](#) for inspiration.

### Benefits

- Reinforces conservation and sustainability education efforts at our local schools
- Supports mission and goals of Keep Winter Park Beautiful & Sustainable
- Builds community relations and stimulates civic engagement

### Funding

The 2026 Green Schools Grant Program has up to \$5,000 available in funding. Keep Winter Park Beautiful & Sustainable Board members will determine the distribution and amount of awarded funds. Grants will be disbursed by **February 11, 2026** to chosen applicants.

## Eligibility Requirements

Pre-K through 12 public and private schools serving students who live in Winter Park. The program also welcomes strong applications from colleges and universities located within the city limits.

Please note that for your project to be eligible, it must be a **NEW** idea, project, or scope than what you have submitted in the past.

## Grant Selection and Scoring Criteria

- **Physical and cultural impact:** How impactful will the proposed project outcomes be for the school campus and greater community? How will the project impact the mindset of the school's population in terms of sustainability?
- **Student involvement and curriculum integration:** What is the extent of student and educator involvement? How will this project add to existing school wide sustainability efforts?
- **Sustainability and natural resources:** How well will the project align with the objectives outlined in Winter Park's SAP? How will the project's outcome support sustainability principles and promote resource conservation?

## Application Guidelines

**The grant application provided on the next page, and any supporting materials must be submitted by 5:00 p.m. EST on, December 31, 2025 electronically to [kwpb@cityofwinterpark.org](mailto:kwpb@cityofwinterpark.org). Submissions should be in Microsoft Word or PDF format.**

## Reporting Requirements

1. Grant recipients will be required to capture and share with the City of Winter Park aspects of their project in ways that are relatable/instructive to the general public. This can be accomplished in one of two ways. Submission of one of the following is required:
  - a. Grantees may prepare a video which showcases their project for the Keep Winter Park Beautiful and Sustainable Advisory Board. This can either be a slideshow of photos or a more creative presentation of the project and its impact. Videos must be less than one minute in length. Or,
  - b. Grantees may prepare a photo essay showcasing their project. This would include no less than 10 photographs with captions describing what is being demonstrated.
2. Grant recipients must submit one of the two submission options prior to **Wednesday, June 3, 2026**.
3. Grant recipients have the opportunity to present in person with or without class to the KWPB&S Board on **Tuesday, June 16, 2026**.
4. Failure to meet reporting requirements may result in ineligibility to apply for future KWPB&S grant opportunities.

## Questions

Contact us at [kwpb@cityofwinterpark.org](mailto:kwpb@cityofwinterpark.org) or 407.599.3479 with any questions.

## Helpful Links

Winter Park Green Schools Grants Page: [cityofwinterpark.org/greenschools](http://cityofwinterpark.org/greenschools)

Winter Park Sustainability Action Plan (SAP): [cityofwinterpark.org/sustainability](http://cityofwinterpark.org/sustainability)

## Important Dates

<b>December 31, 2025</b>	Grant Application Submission Due by 5:00 p.m. EST
<b>January 28, 2026</b>	Grant Recipients Notified
<b>February 11, 2026</b>	Grant Checks Delivered to Recipients
<b>2026 Earth Day Celebration</b>	Grant Recipients Receive Certificate at 2026 Earth Day Celebration
<b>June 3, 2026</b>	Storytelling Submission Due (see <i>Grant Reporting Requirements</i> )
<b>June 16, 2026</b>	Grant Recipients Present Project to KWPB&S Board ( <i>Optional</i> )

# KWPB Green Schools Grant Program 2026 Application

**DUE: Wednesday, December 31, 2025, at 5 p.m. EST**

Please submit your application with responses to these questions in the order outlined below. Grant applications, not including supporting documentation, are to be no more than two pages in length in Microsoft Word or PDF format. **The deadline to submit a grant application is 5:00 p.m. EST on Wednesday, December 31, 2025. Please submit your completed application and supporting documents electronically to [kwpb@cityofwinterpark.org](mailto:kwpb@cityofwinterpark.org).**

## 1. Applicant Information

<b>Today's Date:</b>	December 30, 2025
<b>School:</b>	Methodist School for Early Education
<b>School Address:</b>	125 N Interlachen Ave, Winter Park
<b>Principal:</b>	Ashley Finfrock
<b>Sponsoring Teacher:</b>	Heather Marion
<b>Teacher's Phone #:</b>	407.644.4313
<b>Teacher's E-Mail:</b>	heatherm@fumcwp.org

### Which of the following Sustainability Topics does your project incorporate?

- |  |   |
|--|---|
| <input checked="" type="checkbox"/> Local Food | <input type="checkbox"/> Energy               |
| <input type="checkbox"/> Water Conservation    | <input type="checkbox"/> Natural Resources    |
| <input type="checkbox"/> Recycling             | <input type="checkbox"/> Community Engagement |
| <input type="checkbox"/> Other:                |   |

**2. Project Summary: In one page, make the case for why this project is important to your school and why your proposed project will lead to results.**

1. **Background** – What is the motivation and purpose for the project? Who was involved with identifying a need for this project on the school's campus? (350-word max.)

The Methodist School for Early Education(MSEE) has been growing and developing our Outdoor Classroom for 5 years now. We have built a successful vegetable garden, a rock garden, an interactive mud kitchen, a colorful sound garden, and a beautiful butterfly garden! Our vegetable garden has been such a success, we would love to expand our raised garden area to include a large area specific to our "Kinder-garden". Allowing our older students more room to grow plants and vegetables will give them the opportunity to learn more advanced gardening practices and skills.

2. **Student Involvement** – Describe student involvement in the planning and implementation of the project. Will this project be tied to any on-campus groups or classes? (350-word max.)

Every Fall and Spring, MSEE students are given the opportunity to plant, grow, and harvest their own vegetables and herbs in our Outdoor Classroom gardens. The children are involved in every aspect of the gardening process from cleaning out the bed debris, adding fresh soil, inspecting roots, planting, watering, and eventually eating whatever we grow!

3. **Impact** – Please describe the project's impact on the school and/or community. How have students learned and applied practices of sustainability and conservation at school and/or in the community?

In the Outdoor Classroom we discuss the importance of eating food that is grown locally and impact that has on our environment. Our students learn that food is not grown in a grocery store and that they are capable of growing their own food. Many of our families at MSEE have home gardens and continue the practices that they learn in the Outdoor Classroom well after they have graduated from the preschool.

4. **Sustainability**- Describe how the project will advance and support the Winter Park SAP objectives? How well does the project outcome support sustainability principles and create a culture of resource conservation at your school?

Conservation and sustainability are a continual topic of conversation in MSEE's Outdoor Classroom. With every lesson there is a common thread of reusing, recycling, treating our environment with respect, and developing an appreciation of the world around us. At a preschool level it is important to empower students with the responsibility of nurturing the environment. The goal and hope is that what we teach them now will instill a lifetime of sustainability practices that they will share with others around them,

5. **Project Budget-** Please detail your project budget, how exactly will the money be used? How much money will the project cost? (Capital expense? On-going operations? Both?) Will the school be contributing to the funding of this project?

Our raised "Kinder-garden" budget will cost approximately \$500. The proposed raised bed to be purchased is from a trusted company that we have previously used before for our other raised beds. The funds will be used for the raised beds, purchasing soil, purchasing vegetables, herbs, and seeds.

### 3. Supplemental Material

Please include photos, when possible, and/or student statements, when applicable, regarding the project or program and its impact on the school and their knowledge of sustainability and conservation practices.



## Olle 4-Style Modular Galvanneal Garden Beds [Build 1 of 4 Configurations]

★★★★★ 114 reviews

**\$199.99** ~~\$399.00~~

Color

Cobalt Blue  Sage Green  Midnight Green

− 1 +

Add to Cart

Buy It Now

 Return Policy  Free Shipping

# Keep Winter Park Beautiful & Sustainable Advisory Board



## Green Schools Grant Program Request for Proposals (RFP)

**Grant Proposal must be submitted by 5:00 p.m. EST on [Wednesday], [December 31, 2025]**  
**\*\*Proposals are to be no more than 2 pages long, not including supporting documentation\*\***

### Purpose

The mission of the City of Winter Park's [Keep Winter Park Beautiful & Sustainable Advisory Board \(KWPB&S\)](#) is to improve the quality, sustainability and aesthetics of our environment in order to create a healthier, more beautiful place to live, work, and play. The purpose of the Green Schools Grant is to support schools serving Winter Park in their efforts to achieve sustainability goals and beautify their campus while engaging and educating students grades K-12 in the practices of sustainability. The program also welcomes strong applications from colleges and universities located within the city limits.

The intent of this RFP is to fund projects that will support the objectives of the [Winter Park Sustainability Action Plan \(SAP\)](#), focusing on one or more of the following SAP categories:

- Buildings, Energy, & Water
- Community Engagement & Green Economy
- Local Food & Agriculture
- Mobility and Urban Form
- Natural Systems & Resources
- Waste Diversion & Recycling

Project focus areas could include: water conservation, reducing energy use, waste diversion, green buildings, local food, or transportation.

Examples of past projects include: implementing pollinator or food gardens, creating or expanding recycling programs, creating natural centers, and installing water bottle filling stations.

Other project ideas are posted on our [website](#) for inspiration.

### Benefits

- Reinforces conservation and sustainability education efforts at our local schools
- Supports mission and goals of Keep Winter Park Beautiful & Sustainable
- Builds community relations and stimulates civic engagement

### Funding

The 2026 Green Schools Grant Program has up to \$5,000 available in funding. Keep Winter Park Beautiful & Sustainable Board members will determine the distribution and amount of awarded funds. Grants will be disbursed by **February 11, 2026** to chosen applicants.

## Eligibility Requirements

Pre-K through 12 public and private schools serving students who live in Winter Park. The program also welcomes strong applications from colleges and universities located within the city limits.

Please note that for your project to be eligible, it must be a **NEW** idea, project, or scope than what you have submitted in the past.

## Grant Selection and Scoring Criteria

- **Physical and cultural impact:** How impactful will the proposed project outcomes be for the school campus and greater community? How will the project impact the mindset of the school's population in terms of sustainability?
- **Student involvement and curriculum integration:** What is the extent of student and educator involvement? How will this project add to existing school wide sustainability efforts?
- **Sustainability and natural resources:** How well will the project align with the objectives outlined in Winter Park's SAP? How will the project's outcome support sustainability principles and promote resource conservation?

## Application Guidelines

**The grant application provided on the next page, and any supporting materials must be submitted by 5:00 p.m. EST on, December 31, 2025 electronically to [kwpb@cityofwinterpark.org](mailto:kwpb@cityofwinterpark.org). Submissions should be in Microsoft Word or PDF format.**

## Reporting Requirements

1. Grant recipients will be required to capture and share with the City of Winter Park aspects of their project in ways that are relatable/instructive to the general public. This can be accomplished in one of two ways. Submission of one of the following is required:
  - a. Grantees may prepare a video which showcases their project for the Keep Winter Park Beautiful and Sustainable Advisory Board. This can either be a slideshow of photos or a more creative presentation of the project and its impact. Videos must be less than one minute in length. Or,
  - b. Grantees may prepare a photo essay showcasing their project. This would include no less than 10 photographs with captions describing what is being demonstrated.
2. Grant recipients must submit one of the two submission options prior to **Wednesday, June 3, 2026**.
3. Grant recipients have the opportunity to present in person with or without class to the KWPB&S Board on **Tuesday, June 16, 2026**.
4. Failure to meet reporting requirements may result in ineligibility to apply for future KWPB&S grant opportunities.

## Questions

Contact us at [kwpb@cityofwinterpark.org](mailto:kwpb@cityofwinterpark.org) or 407.599.3479 with any questions.

## Helpful Links

Winter Park Green Schools Grants Page: [cityofwinterpark.org/greenschools](http://cityofwinterpark.org/greenschools)

Winter Park Sustainability Action Plan (SAP): [cityofwinterpark.org/sustainability](http://cityofwinterpark.org/sustainability)

## Important Dates

<b>December 31, 2025</b>	Grant Application Submission Due by 5:00 p.m. EST
<b>January 28, 2026</b>	Grant Recipients Notified
<b>February 11, 2026</b>	Grant Checks Delivered to Recipients
<b>2026 Earth Day Celebration</b>	Grant Recipients Receive Certificate at 2026 Earth Day Celebration
<b>June 3, 2026</b>	Storytelling Submission Due (see <i>Grant Reporting Requirements</i> )
<b>June 16, 2026</b>	Grant Recipients Present Project to KWPB&S Board ( <i>Optional</i> )

# KWPB Green Schools Grant Program 2026 Application

**DUE: Wednesday, December 31, 2025, at 5 p.m. EST**

Please submit your application with responses to these questions in the order outlined below. Grant applications, not including supporting documentation, are to be no more than two pages in length in Microsoft Word or PDF format. **The deadline to submit a grant application is 5:00 p.m. EST on Wednesday, December 31, 2025. Please submit your completed application and supporting documents electronically to [kwpb@cityofwinterpark.org](mailto:kwpb@cityofwinterpark.org).**

## 1. Applicant Information

<b>Today's Date:</b>	
<b>School:</b>	
<b>School Address:</b>	
<b>Principal:</b>	
<b>Sponsoring Teacher:</b>	
<b>Teacher's Phone #:</b>	
<b>Teacher's E-Mail:</b>	

### Which of the following Sustainability Topics does your project incorporate?

- |   |   |
|---|---|
| <input type="checkbox"/> Local Food         | <input type="checkbox"/> Energy               |
| <input type="checkbox"/> Water Conservation | <input type="checkbox"/> Natural Resources    |
| <input type="checkbox"/> Recycling          | <input type="checkbox"/> Community Engagement |
| <input type="checkbox"/> Other:             |   |

**2. Project Summary: In one page, make the case for why this project is important to your school and why your proposed project will lead to results.**

1. **Background** – What is the motivation and purpose for the project? Who was involved with identifying a need for this project on the school's campus? (350-word max.)

2. **Student Involvement** – Describe student involvement in the planning and implementation of the project. Will this project be tied to any on-campus groups or classes? (350-word max.)

3. **Impact** – Please describe the project's impact on the school and/or community. How have students learned and applied practices of sustainability and conservation at school and/or in the community?

4. **Sustainability**- Describe how the project will advance and support the Winter Park SAP objectives? How well does the project outcome support sustainability principles and create a culture of resource conservation at your school?

5. **Project Budget-** Please detail your project budget, how exactly will the money be used? How much money will the project cost? (Capital expense? On-going operations? Both?) Will the school be contributing to the funding of this project?

**3. Supplemental Material**

Please include photos, when possible, and/or student statements, when applicable, regarding the project or program and its impact on the school and their knowledge of sustainability and conservation practices.

# Keep Winter Park Beautiful & Sustainable Advisory Board



## Green Schools Grant Program Request for Proposals (RFP)

**Grant Proposal must be submitted by 5:00 p.m. EST on [Wednesday], [December 31, 2025]**  
**\*\*Proposals are to be no more than 2 pages long, not including supporting documentation\*\***

### Purpose

The mission of the City of Winter Park's [Keep Winter Park Beautiful & Sustainable Advisory Board \(KWPB&S\)](#) is to improve the quality, sustainability and aesthetics of our environment in order to create a healthier, more beautiful place to live, work, and play. The purpose of the Green Schools Grant is to support schools serving Winter Park in their efforts to achieve sustainability goals and beautify their campus while engaging and educating students grades K-12 in the practices of sustainability. The program also welcomes strong applications from colleges and universities located within the city limits.

The intent of this RFP is to fund projects that will support the objectives of the [Winter Park Sustainability Action Plan \(SAP\)](#), focusing on one or more of the following SAP categories:

- Buildings, Energy, & Water
- Community Engagement & Green Economy
- Local Food & Agriculture
- Mobility and Urban Form
- Natural Systems & Resources
- Waste Diversion & Recycling

Project focus areas could include: water conservation, reducing energy use, waste diversion, green buildings, local food, or transportation.

Examples of past projects include: implementing pollinator or food gardens, creating or expanding recycling programs, creating natural centers, and installing water bottle filling stations.

Other project ideas are posted on our [website](#) for inspiration.

### Benefits

- Reinforces conservation and sustainability education efforts at our local schools
- Supports mission and goals of Keep Winter Park Beautiful & Sustainable
- Builds community relations and stimulates civic engagement

### Funding

The 2026 Green Schools Grant Program has up to \$5,000 available in funding. Keep Winter Park Beautiful & Sustainable Board members will determine the distribution and amount of awarded funds. Grants will be disbursed by **February 11, 2026** to chosen applicants.

## Eligibility Requirements

Pre-K through 12 public and private schools serving students who live in Winter Park. The program also welcomes strong applications from colleges and universities located within the city limits.

Please note that for your project to be eligible, it must be a **NEW** idea, project, or scope than what you have submitted in the past.

## Grant Selection and Scoring Criteria

- **Physical and cultural impact:** How impactful will the proposed project outcomes be for the school campus and greater community? How will the project impact the mindset of the school's population in terms of sustainability?
- **Student involvement and curriculum integration:** What is the extent of student and educator involvement? How will this project add to existing school wide sustainability efforts?
- **Sustainability and natural resources:** How well will the project align with the objectives outlined in Winter Park's SAP? How will the project's outcome support sustainability principles and promote resource conservation?

## Application Guidelines

**The grant application provided on the next page, and any supporting materials must be submitted by 5:00 p.m. EST on, December 31, 2025 electronically to [kwpb@cityofwinterpark.org](mailto:kwpb@cityofwinterpark.org). Submissions should be in Microsoft Word or PDF format.**

## Reporting Requirements

1. Grant recipients will be required to capture and share with the City of Winter Park aspects of their project in ways that are relatable/instructive to the general public. This can be accomplished in one of two ways. Submission of one of the following is required:
  - a. Grantees may prepare a video which showcases their project for the Keep Winter Park Beautiful and Sustainable Advisory Board. This can either be a slideshow of photos or a more creative presentation of the project and its impact. Videos must be less than one minute in length. Or,
  - b. Grantees may prepare a photo essay showcasing their project. This would include no less than 10 photographs with captions describing what is being demonstrated.
2. Grant recipients must submit one of the two submission options prior to **Wednesday, June 3, 2026**.
3. Grant recipients have the opportunity to present in person with or without class to the KWPB&S Board on **Tuesday, June 16, 2026**.
4. Failure to meet reporting requirements may result in ineligibility to apply for future KWPB&S grant opportunities.

## Questions

Contact us at [kwpb@cityofwinterpark.org](mailto:kwpb@cityofwinterpark.org) or 407.599.3479 with any questions.

## Helpful Links

Winter Park Green Schools Grants Page: [cityofwinterpark.org/greenschools](http://cityofwinterpark.org/greenschools)

Winter Park Sustainability Action Plan (SAP): [cityofwinterpark.org/sustainability](http://cityofwinterpark.org/sustainability)

## Important Dates

<b>December 31, 2025</b>	Grant Application Submission Due by 5:00 p.m. EST
<b>January 28, 2026</b>	Grant Recipients Notified
<b>February 11, 2026</b>	Grant Checks Delivered to Recipients
<b>2026 Earth Day Celebration</b>	Grant Recipients Receive Certificate at 2026 Earth Day Celebration
<b>June 3, 2026</b>	Storytelling Submission Due (see <i>Grant Reporting Requirements</i> )
<b>June 16, 2026</b>	Grant Recipients Present Project to KWPB&S Board ( <i>Optional</i> )

# KWPB Green Schools Grant Program 2026 Application

**DUE: Wednesday, December 31, 2025, at 5 p.m. EST**

Please submit your application with responses to these questions in the order outlined below. Grant applications, not including supporting documentation, are to be no more than two pages in length in Microsoft Word or PDF format. **The deadline to submit a grant application is 5:00 p.m. EST on Wednesday, December 31, 2025. Please submit your completed application and supporting documents electronically to [kwpb@cityofwinterpark.org](mailto:kwpb@cityofwinterpark.org).**

## 1. Applicant Information

<b>Today's Date:</b>	
<b>School:</b>	
<b>School Address:</b>	
<b>Principal:</b>	
<b>Sponsoring Teacher:</b>	
<b>Teacher's Phone #:</b>	
<b>Teacher's E-Mail:</b>	

### Which of the following Sustainability Topics does your project incorporate?

- |   |   |
|---|---|
| <input type="checkbox"/> Local Food         | <input type="checkbox"/> Energy               |
| <input type="checkbox"/> Water Conservation | <input type="checkbox"/> Natural Resources    |
| <input type="checkbox"/> Recycling          | <input type="checkbox"/> Community Engagement |
| <input type="checkbox"/> Other:             |   |

**2. Project Summary: In one page, make the case for why this project is important to your school and why your proposed project will lead to results.**

1. **Background** – What is the motivation and purpose for the project? Who was involved with identifying a need for this project on the school's campus? (350-word max.)

2. **Student Involvement** – Describe student involvement in the planning and implementation of the project. Will this project be tied to any on-campus groups or classes? (350-word max.)

3. **Impact** – Please describe the project's impact on the school and/or community. How have students learned and applied practices of sustainability and conservation at school and/or in the community?

4. **Sustainability**- Describe how the project will advance and support the Winter Park SAP objectives? How well does the project outcome support sustainability principles and create a culture of resource conservation at your school?

5. **Project Budget-** Please detail your project budget, how exactly will the money be used? How much money will the project cost? (Capital expense? On-going operations? Both?) Will the school be contributing to the funding of this project?

**3. Supplemental Material**

Please include photos, when possible, and/or student statements, when applicable, regarding the project or program and its impact on the school and their knowledge of sustainability and conservation practices.







# Keep Winter Park Beautiful & Sustainable Advisory Board



## Green Schools Grant Program Request for Proposals (RFP)

*Grant Proposal must be submitted by 5:00 p.m. EST on [Wednesday], [December 31, 2025]  
\*\*Proposals are to be no more than 2 pages long, not including supporting documentation\*\**

### Purpose

The mission of the City of Winter Park's [Keep Winter Park Beautiful & Sustainable Advisory Board \(KWPB&S\)](#) is to improve the quality, sustainability and aesthetics of our environment in order to create a healthier, more beautiful place to live, work, and play. The purpose of the Green Schools Grant is to support schools serving Winter Park in their efforts to achieve sustainability goals and beautify their campus while engaging and educating students grades K-12 in the practices of sustainability. The program also welcomes strong applications from colleges and universities located within the city limits.

The intent of this RFP is to fund projects that will support the objectives of the [Winter Park Sustainability Action Plan \(SAP\)](#), focusing on one or more of the following SAP categories:

- Buildings, Energy, & Water
- Community Engagement & Green Economy
- Local Food & Agriculture
- Mobility and Urban Form
- Natural Systems & Resources
- Waste Diversion & Recycling

Project focus areas could include: water conservation, reducing energy use, waste diversion, green buildings, local food, or transportation.

Examples of past projects include: implementing pollinator or food gardens, creating or expanding recycling programs, creating natural centers, and installing water bottle filling stations.

Other project ideas are posted on our [website](#) for inspiration.

### Benefits

- Reinforces conservation and sustainability education efforts at our local schools
- Supports mission and goals of Keep Winter Park Beautiful & Sustainable
- Builds community relations and stimulates civic engagement

### Funding

The 2026 Green Schools Grant Program has up to \$5,000 available in funding. Keep Winter Park Beautiful & Sustainable Board members will determine the distribution and amount of awarded funds. Grants will be disbursed by **February 11, 2026** to chosen applicants.

## Eligibility Requirements

Pre-K through 12 public and private schools serving students who live in Winter Park. The program also welcomes strong applications from colleges and universities located within the city limits. Please note that for your project to be eligible, it must be a **NEW** idea, project, or scope than what you have submitted in the past.

## Grant Selection and Scoring Criteria

- **Physical and cultural impact:** How impactful will the proposed project outcomes be for the school campus and greater community? How will the project impact the mindset of the school's population in terms of sustainability?
- **Student involvement and curriculum integration:** What is the extent of student and educator involvement? How will this project add to existing school wide sustainability efforts?
- **Sustainability and natural resources:** How well will the project align with the objectives outlined in Winter Park's SAP? How will the project's outcome support sustainability principles and promote resource conservation?

## Application Guidelines

The grant application provided on the next page, and any supporting materials must be submitted by 5:00 p.m. EST on, **December 31, 2025** electronically to [kwpb@cityofwinterpark.org](mailto:kwpb@cityofwinterpark.org). Submissions should be in Microsoft Word or PDF format.

## Reporting Requirements

1. Grant recipients will be required to capture and share with the City of Winter Park aspects of their project in ways that are relatable/instructive to the general public. This can be accomplished in one of two ways. Submission of one of the following is required:
  - a. Grantees may prepare a video which showcases their project for the Keep Winter Park Beautiful and Sustainable Advisory Board. This can either be a slideshow of photos or a more creative presentation of the project and its impact. Videos must be less than one minute in length. Or,
  - b. Grantees may prepare a photo essay showcasing their project. This would include no less than 10 photographs with captions describing what is being demonstrated.
2. Grant recipients must submit one of the two submission options prior to **Wednesday, June 3, 2026**.
3. Grant recipients have the opportunity to present in person with or without class to the KWPB&S Board on **Tuesday, June 16, 2026**.
4. Failure to meet reporting requirements may result in ineligibility to apply for future KWPB&S grant opportunities.

## Questions

Contact us at [kwpb@cityofwinterpark.org](mailto:kwpb@cityofwinterpark.org) or 407.599.3479 with any questions.

## Helpful Links

Winter Park Green Schools Grants Page: [cityofwinterpark.org/greenschools](http://cityofwinterpark.org/greenschools)

Winter Park Sustainability Action Plan (SAP): [cityofwinterpark.org/sustainability](http://cityofwinterpark.org/sustainability)

## Important Dates

<b>December 31, 2025</b>	Grant Application Submission Due by 5:00 p.m. EST
<b>January 28, 2026</b>	Grant Recipients Notified
<b>February 11, 2026</b>	Grant Checks Delivered to Recipients
<b>2026 Earth Day Celebration</b>	Grant Recipients Receive Certificate at 2026 Earth Day Celebration
<b>June 3, 2026</b>	Storytelling Submission Due <i>(see Grant Reporting Requirements)</i>
<b>June 16, 2026</b>	Grant Recipients Present Project to KWPB&S Board <i>(Optional)</i>

# KWPB Green Schools Grant Program 2026 Application

**DUE: Wednesday, December 31, 2025, at 5 p.m. EST**

Please submit your application with responses to these questions in the order outlined below. Grant applications, not including supporting documentation, are to be no more than two pages in length in Microsoft Word or PDF format. **The deadline to submit a grant application is 5:00 p.m. EST on Wednesday, December 31, 2025. Please submit your completed application and supporting documents electronically to [kwpb@cityofwinterpark.org](mailto:kwpb@cityofwinterpark.org).**

## 1. Applicant Information

<b>Today's Date:</b>	12/17/2025
<b>School:</b>	Welbourne Avenue Nursery and Preschool
<b>School Address:</b>	450 W. Welbourne Avenue, Winter Park, FL 32789
<b>Principal:</b>	Latonya K. Pelt
<b>Sponsoring Teacher:</b>	Cynthia Cintron
<b>Teacher's Phone #:</b>	407-644-5885
<b>Teacher's E-Mail:</b>	programs@welbourneavenuenursery.org

### Which of the following Sustainability Topics does your project incorporate?

- |  |  |
|--|--|
| <input type="checkbox"/> Local Food                    | <input type="checkbox"/> Energy                          |
| <input checked="" type="checkbox"/> Water Conservation | <input type="checkbox"/> Natural Resources               |
| <input checked="" type="checkbox"/> Recycling          | <input checked="" type="checkbox"/> Community Engagement |
| <input type="checkbox"/> Other:                        |  |

**2. Project Summary: In one page, make the case for why this project is important to your school and why your proposed project will lead to results.**

1. **Background** – What is the motivation and purpose for the project? Who was involved with identifying a need for this project on the school's campus? (350-word max.)

Please see the enclosed document.

2. **Student Involvement** – Describe student involvement in the planning and implementation of the project. Will this project be tied to any on-campus groups or classes? (350-word max.)

Please see the enclosed document.

3. **Impact** – Please describe the project's impact on the school and/or community. How have students learned and applied practices of sustainability and conservation at school and/or in the community?

Please see the enclosed document.

4. **Sustainability**- Describe how the project will advance and support the Winter Park SAP objectives? How well does the project outcome support sustainability principles and create a culture of resource conservation at your school?

Please see the enclosed document.

5. **Project Budget-** Please detail your project budget, how exactly will the money be used? How much money will the project cost? (Capital expense? On-going operations? Both?) Will the school be contributing to the funding of this project?

Please see the enclosed document.

### 3. Supplemental Material

Please include photos, when possible, and/or student statements, when applicable, regarding the project or program and its impact on the school and their knowledge of sustainability and conservation practices.

1. **Background-** What is the motivation and purpose for the project? Who was involved with identifying a need for this project on the school's campus? (350-word max.)

The motivation for this project is rooted in Welbourne Avenue Nursery and Preschool's commitment to creating a clean, safe, and environmentally responsible learning environment for young children. As an early childhood education program, we recognize that our campus is not only a place for learning but also a space where lifelong values—such as environmental stewardship, community pride, and sustainability—are first introduced. Maintaining a beautiful and sustainable campus directly supports the health, safety, and well-being of our students while reinforcing positive habits that extend beyond the classroom.

The purpose of this project is to enhance the overall appearance and sustainability of our campus by addressing identified areas in need of improvement, including outdoor learning spaces and common areas used daily by students, staff, and families. By improving these areas, we aim to create a more welcoming, functional, and environmentally friendly space that encourages outdoor exploration, hands-on learning, and responsible care for the environment. The project aligns with the mission of Keep Winter Park Beautiful and Sustainable by promoting cleanliness, beautification, and sustainable practices within our school community.

The need for this project was identified through collaborative discussions involving school leadership, teaching staff, and families. The Director and classroom teachers observed that certain outdoor areas could better support learning if they were enhanced with sustainable materials, improved landscaping, and child-friendly features. Teachers, in particular, expressed a desire for improved outdoor spaces that could be used for environmental education, sensory play, and nature-based learning experiences. Feedback from families further reinforced the importance of maintaining a campus that reflects pride, safety, and environmental responsibility.

Together, these stakeholders recognized that investing in campus beautification and sustainability would benefit not only current students but also future families and the surrounding community. This project represents a collective effort to foster environmental awareness at an early age while contributing to a cleaner, more sustainable Winter Park.

2. **Student Involvement-** Describe student involvement in the planning and implementation of the project. Will this project be tied to any on-campus groups or classes? (350-word max.)

Student involvement is a central component of this project and reflects Welbourne Avenue Nursery and Preschool’s commitment to hands-on, age-appropriate learning. While our students are young, they are actively engaged in meaningful ways that support planning, implementation, and ongoing care of the project. Through guided activities, students will participate in discussions about caring for their school environment, identifying areas that need improvement, and learning why cleanliness, beautification, and sustainability are important.

During the planning phase, teachers will introduce classroom lessons focused on environmental responsibility, nature, and community care. Students will be encouraged to share their observations about the outdoor spaces they use daily, such as playgrounds and learning areas. Their input—expressed through conversation, drawings, and group discussions—will help guide project decisions in a developmentally appropriate manner. This approach allows students to feel a sense of ownership and pride in their school environment.

Implementation of the project will be integrated into classroom activities and on-campus learning experiences. Students will assist with age-appropriate tasks such as planting flowers or greenery, helping to water plants, participating in campus clean-up activities, and learning proper recycling and waste disposal practices. Teachers will supervise all activities to ensure safety while reinforcing lessons on teamwork, responsibility, and environmental stewardship.

The project will be directly tied to on-campus classrooms and early childhood learning groups, particularly through science, nature, and social studies concepts embedded in the curriculum. Teachers will use the project as a real-world learning tool to support early learning standards related to observation, cooperation, and care for the environment. Ongoing maintenance of the improved areas will also become part of classroom routines, allowing students to see the long-term impact of their efforts.

By involving students in both the planning and implementation stages, this project promotes active learning, environmental awareness, and community pride. It empowers young learners to understand that their actions matter and that they play an important role in keeping their school—and Winter Park—beautiful and sustainable.



**3. Impact-** Please describe the project’s impact on the school and/or community. How have students learned and applied practices of sustainability and conservation at school and/or in the community?

Welbourne’s project has had a meaningful and lasting impact on both the school community and the surrounding Winter Park area by embedding sustainability and conservation into students’ everyday learning experiences. Through hands-on, place-based activities, students actively participate in caring for their campus and understanding their role as environmental stewards. The project enhances the school grounds while fostering a culture of responsibility, respect for nature, and community pride that extends beyond the classroom.

Students have learned and applied sustainable practices through activities such as maintaining school gardens, composting food scraps, reducing waste, conserving water, and caring for native and pollinator-friendly plants. These experiences allow students to see the direct results of their actions—healthier soil, thriving plants, reduced waste, and cleaner shared spaces. Lessons are reinforced through daily routines and outdoor learning, helping students connect environmental concepts to real-world outcomes in age-appropriate and meaningful ways.

The impact reaches the broader community as students share their knowledge with families and visitors, modeling environmentally responsible behaviors and encouraging sustainable practices at home. By nurturing environmental awareness at a young age, Welbourne is helping cultivate future citizens who value conservation, sustainability, and the long-term well-being of Winter Park’s natural resources.



**4. Sustainability-** Describe how the project will advance and support the Winter Park SAP objectives? How well does the project outcome support sustainability principles and create a culture of resource conservation at your school?

The project directly advances and supports Winter Park’s Sustainability Action Plan (SAP) objectives by promoting environmental stewardship, waste reduction, resource conservation, and community education. By integrating sustainability practices into daily school operations and student learning, the project supports the SAP’s focus on building a culture of sustainability through education, behavior change, and long-term environmental responsibility.

The project outcome strongly reflects core sustainability principles, including conservation of natural resources, reduction of waste, and protection of local ecosystems. Students actively engage in practices such as composting, recycling, conserving water, and caring for native and pollinator-friendly plants, all of which align with SAP goals related to waste diversion, water conservation, and biodiversity. These hands-on experiences help students understand how individual actions contribute to broader environmental outcomes, reinforcing the importance of responsible resource use.

By embedding sustainable practices into the school culture, the project creates lasting behavioral change rather than one-time activities. Students, staff, and families collectively participate in conservation efforts, fostering shared ownership and accountability. This sustained engagement ensures that sustainability becomes a daily habit and core value at Welbourne, supporting Winter Park’s long-term vision for a healthier, more resilient, and environmentally responsible community.



**5. Project Budget-** Please detail your project budget, how exactly will the money be used? How much money will the project cost? (Capital expense? On-going operations? Both?) Will the school be contributing to the funding of this project?

The total cost of the project is estimated at approximately \$1,000.00 and includes both one-time capital expenses and limited ongoing operational costs. Grant funds from the Keep Winter Park Beautiful and Sustainable program will be used specifically to support materials and infrastructure that allow the project to be implemented and sustained over time.

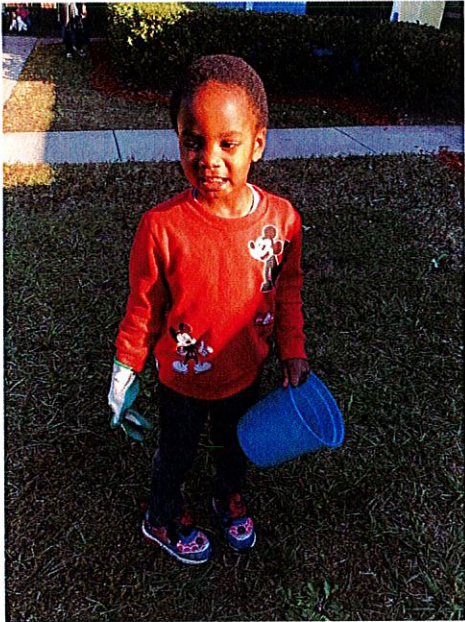
Grant funds will be used for the following purposes:

- Purchase of garden and sustainability infrastructure, such as raised garden beds, planters, composting systems, soil, mulch, and irrigation components
- Native and pollinator-friendly plants that support local biodiversity and environmental education
- Educational signage and instructional materials that reinforce sustainability concepts and proper resource use
- Tools and supplies for student use, including hand tools, gloves, and maintenance materials

These items represent capital expenses that will have long-term value and allow students to continuously engage in sustainability and conservation practices. Any ongoing operational costs (such as plant replacement, minor maintenance, or consumable supplies) will be minimal and managed within existing school resources.

Welbourne will contribute to the project through in-kind support, including staff time, student involvement, maintenance of the project area, and integration of the project into the school's curriculum. The school may also supplement funding as needed to support ongoing care and long-term sustainability. This shared investment ensures the project remains viable beyond the grant period and continues to benefit students and the broader school community.

3. Supplemental Materials: Please include photos, when possible, and/or student statements, when applicable, regarding the project or program and its impact on the school and their knowledge of sustainability and conservation practices.





Keep Winter Park  
Beautiful &  
Sustainable Advisory  
Board

# agenda item 6.a

**item type**

Staff Updates

**meeting date**

January 20, 2026

**prepared by**

Victoria Tabor, Administrative Coordinator III

**approved by**

Victoria Tabor, Administrative Coordinator III

**subject**

Natural Resources & Sustainability

- Martin Luther King Jr. Learning Garden Update
- KWPB&S Note Card Update

**motion | recommendation****background****alternatives | other considerations****fiscal impact****attachments**

1. KWPB&S PPT DRAFT

# Keep Winter Park Beautiful & Sustainable Meeting

Tuesday, January 20<sup>th</sup>, 2026

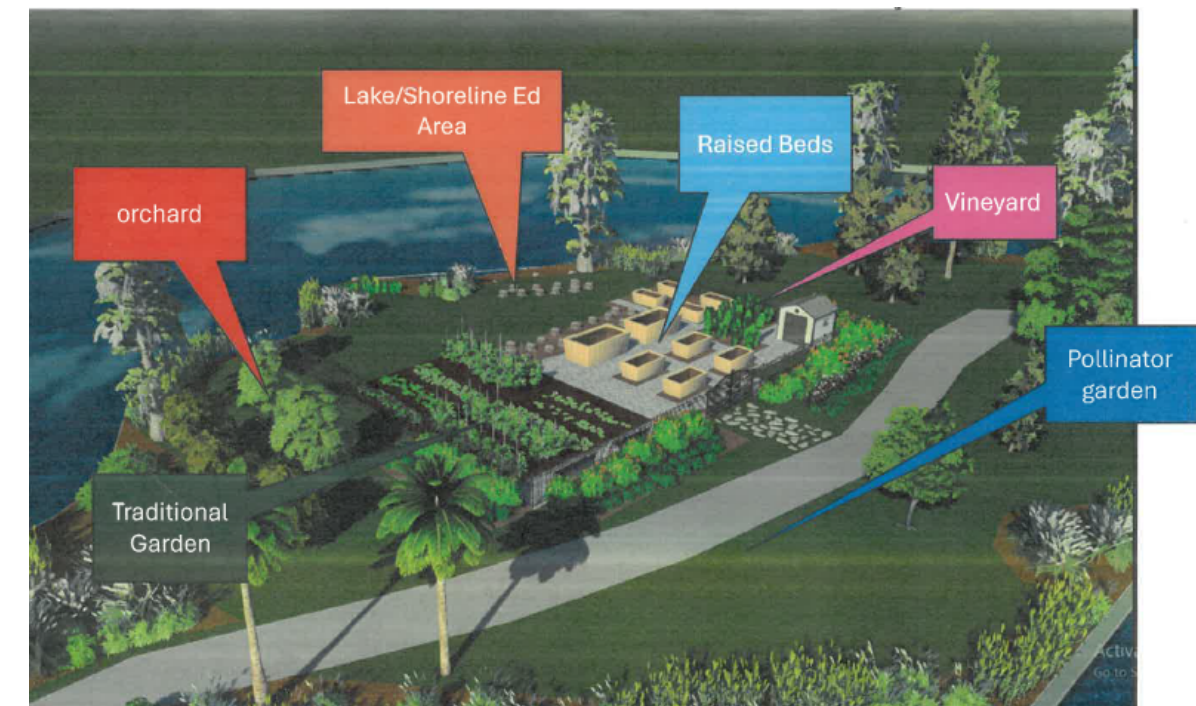




# Martin Luther King, Jr. Learning Garden

- Awarded Martin Luther King Jr. Corridor Community Grant (through Keep America Beautiful)
  - Grant completion deadline: February 2, 2026
- Learning Garden will include:
  - 10 raised beds for edibles
  - Fence & arbor
  - Storage Shed
  - Gardening/ Educational materials
  - 6 Fruit trees
  - Tree stump outdoor classroom area
  - Wash station
  - Composter
  - Native landscaping and aquatic shoreline
  - Interpretive signage

# Martin Luther King, Jr. Learning Garden



# Nature Note Cards

- 2025 Nature Photography Note Cards are now available for sale!
  - \$20 purchase on WebTrac
- Advertising
  - Social media
  - City eTVs
  - Utility bill





# Keep Winter Park Beautiful & Sustainable Advisory Board

# agenda item 6.b

## item type

Staff Updates

## meeting date

January 20, 2026

## prepared by

Victoria Tabor, Administrative Coordinator III

## approved by

Victoria Tabor, Administrative Coordinator III

## subject

Upcoming Events

- MLK Park Litter Clean-up — January 24th 9 am @ MLK Park
- Love the Earth Tree Planting — February 7th 9 am @ Howell Branch Preserve

## motion | recommendation

## background

## alternatives | other considerations

## fiscal impact

## attachments

None



Keep Winter Park  
Beautiful &  
Sustainable Advisory  
Board

# agenda item 7.a

**item type**

Board Comments

**meeting date**

January 20, 2026

**prepared by**

Victoria Tabor, Administrative Coordinator III

**approved by**

Victoria Tabor, Administrative Coordinator III

**subject**

Green Minutes

**motion | recommendation**

**background**

**alternatives | other considerations**

**fiscal impact**

**attachments**

None



Keep Winter Park  
Beautiful &  
Sustainable Advisory  
Board

# agenda item 7.b

**item type**

Board Comments

**meeting date**

January 20, 2026

**prepared by**

Victoria Tabor, Administrative Coordinator III

**approved by**

Victoria Tabor, Administrative Coordinator  
III

**subject**

New Business/Announcements

**motion | recommendation**

**background**

**alternatives | other considerations**

**fiscal impact**

**attachments**

None



Keep Winter Park  
Beautiful &  
Sustainable Advisory  
Board

# agenda item 8.a

**item type**

Upcoming Agenda Items

**meeting date**

January 20, 2026

**prepared by**

Victoria Tabor, Administrative Coordinator III

**approved by**

Victoria Tabor, Administrative Coordinator III

**subject**

Discussion of Upcoming Agenda Items

**motion | recommendation**

**background**

**alternatives | other considerations**

**fiscal impact**

**attachments**

None