



Lake Killarney Board Regular Meeting

Agenda

September 3, 2025 @ 10:00 AM

City Hall Commission Chambers
401 S. Park Avenue

welcome

Agendas and all backup material supporting each agenda item are accessible via the city's website at cityofwinterpark.org/meetings/ and include virtual meeting instructions.

assistance & appeals

Persons with disabilities needing assistance to participate in any of these proceedings should contact the City Clerk's Office ([407-599-3277](tel:407-599-3277)) at least 48 hours in advance of the meeting.

"If a person decides to appeal any decision made by the Board with respect to any matter considered at this hearing, a record of the proceedings is needed to ensure that a verbatim record of the proceedings is made, which record includes the testimony and evidence upon which the appeal is to be based." (F.S. 286.0105).

please note

Times are projected and subject to change.

1. Call to Order

2. Approval of Minutes

- a. Minutes of August 6, 2025 1 Minute

3. Public Comments (for items not on the agenda): Three minutes allowed for each speaker

4. Public Hearings (Public participation and comment on these matters must be in person.)

5. Action Items

6. Non-Action Items

7. Staff Updates

- a. Orange County Update 10 Minutes

- b. Lakes Management Update 10 Minutes

- Lake Killarney Data Updates
- Aquatic Plant Management Treatment Updates
- Hazardous Algal Bloom Update
- Maintenance & Efforts
- Flood Management Guide

- c. Upcoming Events 0 Minutes

- Fix It! Don't Pitch it! - September 6th 8am @ Winter Park Community Center
- Orange County Lake Killarney Advisory Board Meeting - September 11th 5pm @ Public Safety Building (500 N. Virginia Ave.)
- Paddleboard Cleanup - September 13th 9am @ Kraft Azaela/Lake Maitland
- Get Hooked! - October 4th 7am @ MLK Pond
- Paddleboard Cleanup - Fall TBD @ Lake Killarney

- d. Stormwater Management Update 10 Minutes

- CIP Update
- Killarney Dr. Pipe Replacement Timeline
- Map of Gay Rd New Development

- Map of Private Exfiltration Systems (Contributing Basin for Lake Killarney)
- Lakefront Construction Update

Follow-up Items

- Orange County Killarney Dr. Update
- Street Sweeping Contracted Services Update
- Major Outfalls Inspection Schedule

- | | | |
|----|--|-----------|
| e. | Requested Deliverables | 0 Minutes |
| | <ul style="list-style-type: none"> • Map of Private Lift Stations | |

8. Board Comments

- | | | |
|----|--|-----------|
| a. | Discussion of Public Comments Received | 5 Minutes |
|----|--|-----------|

9. Upcoming Agenda Items

- | | | |
|----|---------------------------------|-----------|
| a. | Upcoming Agenda Items | 5 Minutes |
| b. | Summary of Meeting Action Items | 5 Minutes |

10. Adjournment



item type

Approval of Minutes

meeting date

September 3, 2025

prepared by

approved by

subject

Minutes of August 6, 2025

motion | recommendation

background

alternatives | other considerations

fiscal impact

attachments

1. LKB Minutes 8-6-25 DRAFT



Lake Killarney Board Regular Meeting Minutes

August 6, 2025 at 10:00 AM

City Hall Commission Chambers
401 S. Park Avenue

Present

Carolyn Minear, David L. Dickerson, Brian King, Jeanne Wall (Virtual), William Voecks

Absent

Ellen Hencken, Jason K. Ellison

Staff Present

Director of Natural Resources and Sustainability Gloria Eby, Assistant Director of Public Works Don Marcotte; Public Works Engineer Shannon Monahan, Lakes Division Manager Joseph Cordell, Lakes Specialist Daniel Barber, Administrative Assistant Victoria Tabor

Also Present:

Orange County Senior Environmental Specialist Nidia Volpe (Virtual)

1. Call to Order

The meeting was called to order at 10:03 am.

2. Consent Agenda

- a. Approve the minutes of July 2, 2025

**Motion made by Ms. Minear to approve the minutes, seconded by Mr. Voecks.
Motion carried unanimously with a 5-0 vote.**

3. Public Comments (for items not on the agenda)

4. Public Hearings (Public participation and comment on these matters must be in person.)

5. Action Items

6. Non-Action Items

7. Staff Updates

- a. Orange County Update

Ms. Volpe reported no new information from Mr. Mitchell regarding the Killarney Drive stormwater drainage repair project. Efforts are ongoing to collaborate with procurement to include street sweeping in the Orange County section of the Lake Killarney watershed.

- b. Lakes Management Update

Lake Killarney Data Updates

Aquatic Plant Management Treatment Updates

Hazardous Algal Bloom Update

Maintenance & Efforts

Prioritization List

Private Lift Station Agreement Update

Ms. Eby noted that the Flood Management Guide was mistakenly placed on the agenda; it is not complete and is still undergoing internal review and revisions.

Ms. Eby provided updates on Aquatic Plant Management Treatments, mentioning that treatments are ongoing in Killarney and the canal. She explained that Brazilian pepper is obstructing the planting of landscape plants, so it is currently being treated.

Update on Hazardous Algal Blooms (HABs): The results from the state testing indicate no detection of toxins in the samples analyzed. Multiple samples have consistently returned with zero toxin levels. Although the Department of Health (DOH) has lowered the alert status based on the two non-detect samples, a new sample could be initiated at any time, which could lead to the reissuance of a new advisory. The city's proactive messaging will remain in effect as lakes can fluctuate in and out of blooms for the remainder of peak season, and given reported concerns during the Killarney Board meetings, it is prudent to continue issuing precautionary advisories for Lake Killarney. Staff recommends that the public remain informed and exercise caution during peak summer months.

Mr. Voecks stated that an alert left active has no value. Ms. Eby explained that it is the staff's fiduciary duty to share relevant information about a lake, which could lead to precautionary advisements being issued based on experience. Further discussion continued regarding alerts and Florida Department of Environmental Protection (FDEP) sampling. Staff confirmed that the city follows DOH protocol. Ms. Wall requested a copy of the DOH policy and suggested including more detailed information on the website alert. Ms. Eby explained that limited website space prevents detailed updates, so the Mailchimp system informs citizens about Lake Killarney with resources, links to the DOH and FDEP, and detailed information on HABs. Ms. Wall noted that the Mailchimp message is lengthy and may be confusing for citizens, suggesting instead adding a brief website note about the four negative sample results.

Maintenance & Efforts - 50 gallons debris removed & 55 gallons of trash removed

Ms. Eby noted the upcoming events: the Orange County Lake Killarney Advisory Board meeting scheduled for September 11th and the paddleboard cleanup at Lake Maitland on September 13th. Ms. Wall inquired about the Sunshine Law. She asked whether the attendance of more than one Winter Park Lake Killarney board member at the Orange County Board meeting could constitute a violation, given that the public was not informed that multiple board members would be present. Ms. Volpe informed that the

Orange County meeting is publicly noticed. Ms. Eby will clarify whether Winter Park is required to independently provide public notice in addition to Orange County's notice due to the potential attendance of two or more Winter Park board members at an Orange County board meeting.

Ms. Eby asked for any comments, suggestions or edits on the prioritization list and stated it will be periodically updated.

The agreement template for the Private Lift Station, along with the requested maps, is included in the packet. Ms. Eby shared an email from Mr. Dave Zusi stating, "We have selected a candidate for the position of administrative assistant who will assist in managing the private lift station program. She is scheduled to start early August. The agreements are available, and each non-residential private lift station owner will be responsible for completing these agreements. Of course, it will take some time to get all owners on board with a signed agreement." Additionally, he attached a map illustrating the non-residential private lift station service area and a detailed map of the Lake Killarney area. Discussion of the map previously presented in a meeting which included the city manager and Ms. Wall, was described by Ms. Wall noting the map was of a larger size and included the whole city. Ms. Eby advised they will attempt to locate this map and provide a digital copy to the board.

Mr. Cordell presented the slides on elevation from mid-June to mid-July, along with updates on phosphorus for March, and information on nitrogen, clarity, and TSI.

c. Upcoming Events

Fix It! Don't Pitch it! - September 6th 8 am @ Winter Park Community Center

Orange County Lake Killarney Advisory Board Meeting - September 11th 5 pm @ Public Safety Building (500 N. Virginia Ave.)

Paddleboard Cleanup - September 13th 9 am @ Kraft Azalea/Lake Maitland

d. Stormwater Management Update

CIP Update

Killarney Dr. Pipe Replacement Timeline

Map of Private Exfiltration Systems (Contributing Basins for Lake Killarney)

Orange County Killarney Dr. Update

Major Outfalls Inspection Schedule

Ms. Monahan presented the CIP. Mr. Marcotte provided the latest photographs of the Lake Killarney Drive stormwater improvement project. All infrastructure is underground; however, there was a leaky water main pipe requiring repair. Until the repair is completed and inspected, the subsequent steps involve restoring all affected areas, including the brick roadway. The project remains on schedule under the leadership of the new project manager, Mr. Justin Falk. Additionally, Ms. Minear displayed a photograph illustrating flooding in her area following heavy rainfall.

Ms. Monahan stated that intern Ms. Kelliyah Cheribun is developing, creating, and updating a new GIS layer of private exfiltration systems, which includes all properties with agreements with the city. Responses are still being received, and many stakeholders are onboarding vendors they hadn't previously engaged. This draft specifically addresses underground stormwater exfiltration, not lift stations.

Ms. Monahan reported no new lakefront construction.

The follow-up items will remain on the agenda and be carried over to the next meeting. The street sweeping vendor is United Street Sweeping.

e. Requested Deliverables

Map on Private Lift Stations

8. Board Comments

Mr. Voecks thanked the staff for sharing the mesotropic information document explain the TSI Index used for Florida.

Mr. Ramdatt informed Mr. Marcotte that the city will supply a golf cart to transport guests for Ms. Minear's upcoming party, given the current street conditions.

a. Discussion of Public Comments Received

9. Upcoming Agenda Items

a. Upcoming Agenda Items

- HAB Mailchimp update with sampling dates and continue best management practices for safety.
- Send the complete Excel spreadsheet of the prioritization list via email.
- A digital version of David Zusi's detailed map of the private lift stations referenced by Ms. Wall.
- Follow-up items include the Killarney Drive major outfall update, the inspection schedule, and the street sweeping contract and services update.
- The Sunshine Law question concerning more than one WP Lake Killarney board member attending the Orange County Lake Killarney board meeting.

b. Summary of Meeting Action Items

10. Adjournment

The meeting adjourned at 10:57 a.m.

Approved by the board on
/s/ Bahiyyah Layton, Board Coordinator



Lake Killarney Board

agenda item 7.a

item type

Staff Updates

meeting date

September 3, 2025

prepared by

Victoria Tabor, Administrative Coordinator III

approved by

Victoria Tabor, Administrative Coordinator III

subject

Orange County Update

motion | recommendation**background****alternatives | other considerations****fiscal impact****attachments**

None



item type

Staff Updates

meeting date

September 3, 2025

prepared by

Victoria Tabor, Administrative Coordinator III

approved by

Victoria Tabor, Administrative Coordinator III

subject

Lakes Management Update

- Lake Killarney Data Updates
- Aquatic Plant Management Treatment Updates
- Hazardous Algal Bloom Update
- Maintenance & Efforts
- Flood Management Guide

motion | recommendation

background

alternatives | other considerations

fiscal impact

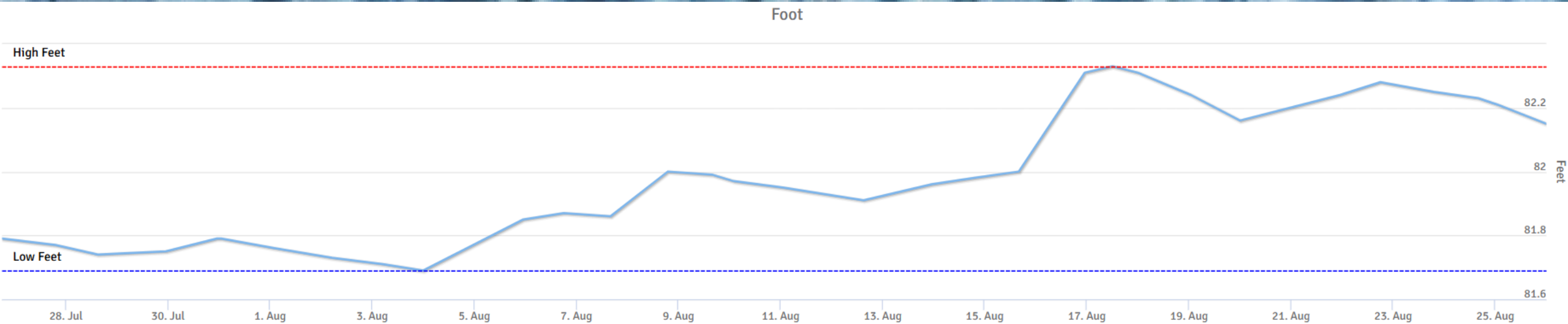
attachments

1. Lake Update 09.2025
2. Adaptive Flood Management Guide - AUG 2025

LAKE UPDATE:

- Lake Killarney Data Updates
- Aquatic Plant Management Treatment Updates
 - Canal Salvinia Treatment
 - Access Corridor Treatment
- Hazardous Algal Bloom Update
- Maintenance and Efforts:
 - Debris Removed
 - Trash Removed
- Flood Management Guide
- Upcoming Events
 - Orange County Lake Killarney Advisory Board Meeting – September 11th 5pm @ Public Safety Building (500 N. Virginia Ave.)
 - Paddleboard Cleanup – September 13th 9am @ Kraft Azalea/Lake Maitland
 - Paddleboard Cleanup – Fall TBD @ Lake Killarney

Lake Killarney Elevation (2025)



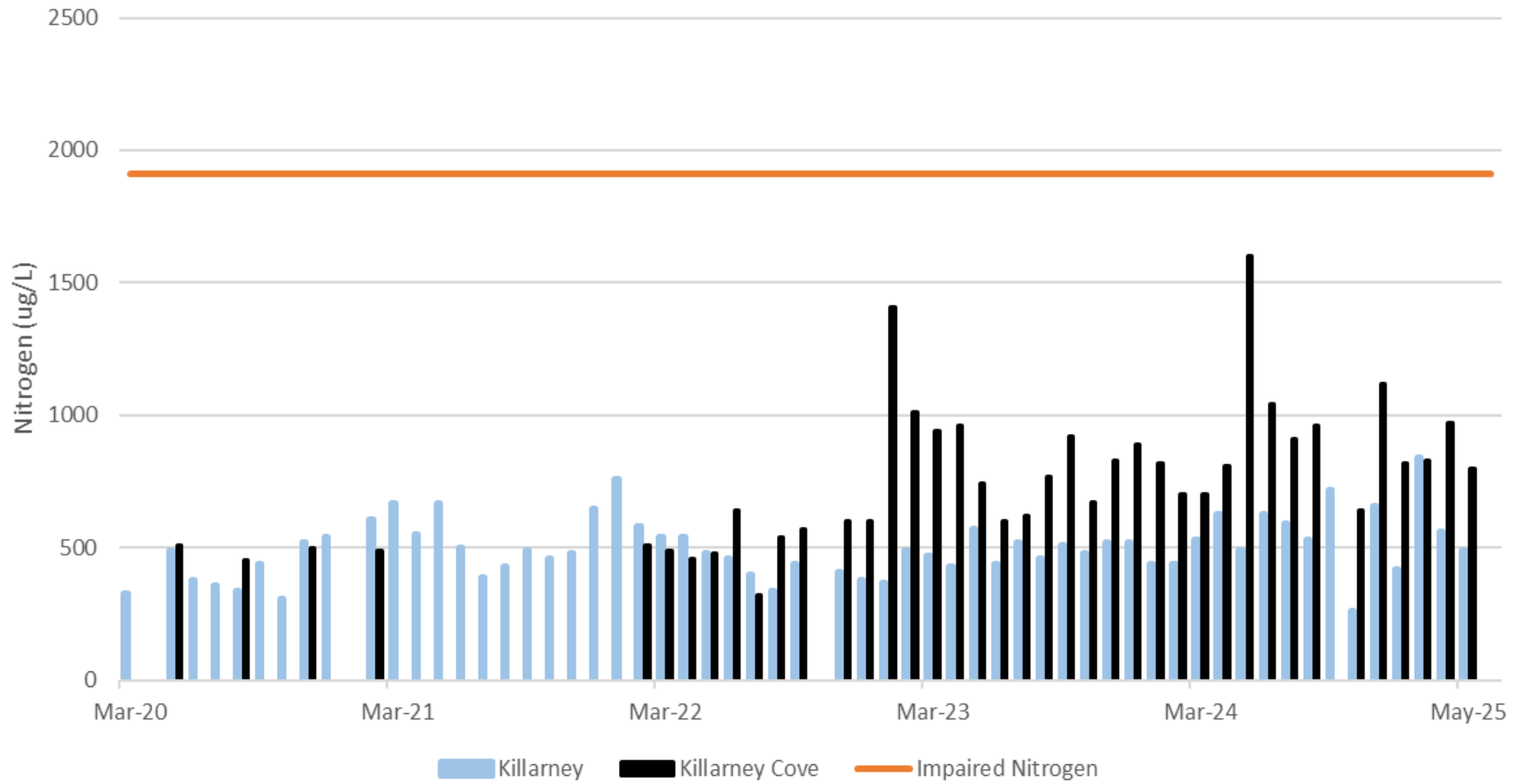
Drainwell Elevations :

- Killarney Drain Wells @ avg 81.66'
- Top of Drain Well casings @ avg 80.0'

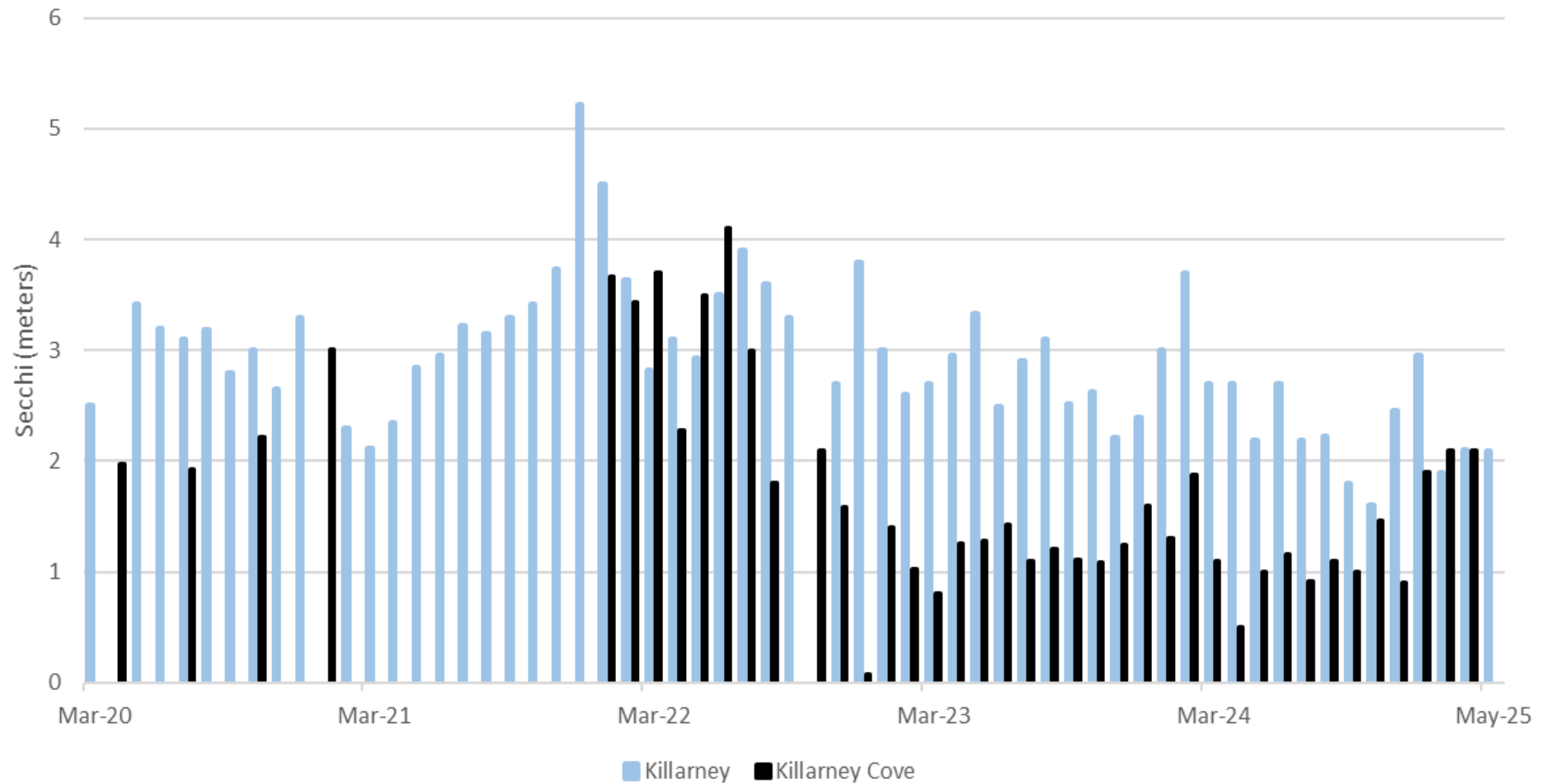
Weir Elevations :

- Orlando Ave Weir inflow @ 81.14'
- Lake Gem Weir outflow @ 82.7'

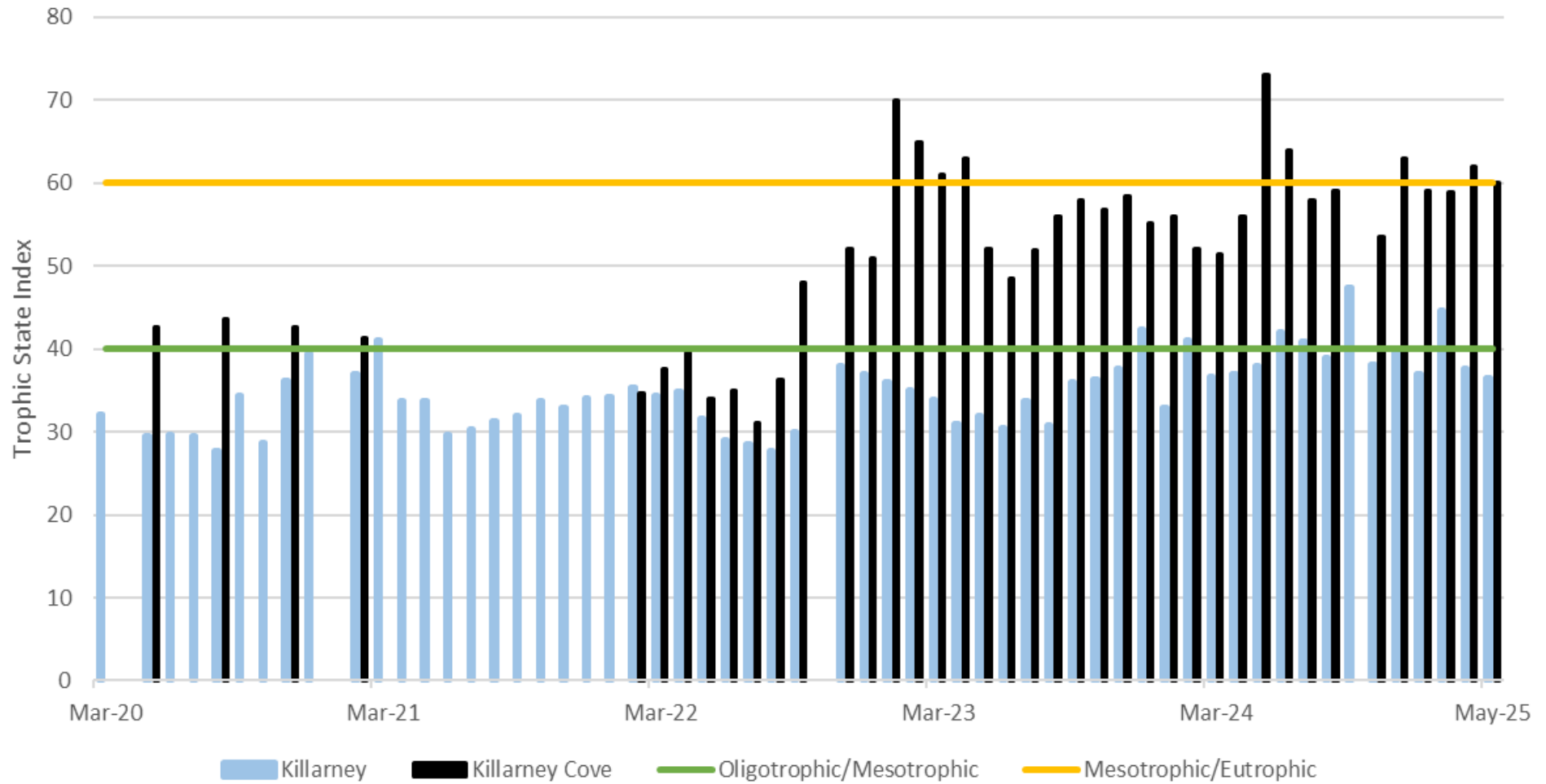
Nitrogen (TN) Comparison



Clarity Comparison



Trophic State Index (TSI) Comparison





CITY OF WINTER PARK ADAPTIVE FLOOD MANAGEMENT GUIDE

Adopted OCTOBER 2023
Revised MAY 2025, AUGUST 2025

In May of 2023, the National Hurricane Center (NHC) changed its Tropical Weather Outlook notification from five-days to seven-days. The NHC extended the outlook due to technological advancements with satellites and modeling stating that seven-day forecasts are just as reliable as the five-day forecasts.

With this technological development, ~~daily active management of lake levels within adaptive flood management activities occur in~~ the City of Winter Park ~~will occur~~ upon issuance ~~that by the National Hurricane Center (NHC) that~~ tropical activity has been identified ~~by the National Hurricane Center (NHC) in the new for the new~~ Seven-Day Outlook forecast. ~~Protocols and procedures will further be further enacted when the NHC's issues a projected cone path, known as the cone of uncertainty, touches threatening the Central Florida Region, as defined below,~~ whereby the active management of lowering lake levels will occur according to the specifications found within this guide. ~~In addition, annual notification to the Florida Department of Environmental Protection (FDEP), in writing, is required for implementing drain well activities.~~ The City Manager has the authority to override the flood management policy if circumstances dictate doing so. Any such override, including the reasoning, shall be documented in writing. ~~In addition, annual notification to the Florida Department of Environmental Protection (FDEP), in writing, is required for implementing lake and pond drawdown via drain well activities.~~

This guide was developed in collaboration with the Lakes & Waterways and Lake Killarney ~~Advisory Boards to Boards to~~ empower the City's professional staff on adaptive lake management decisions.

Formatted: Left

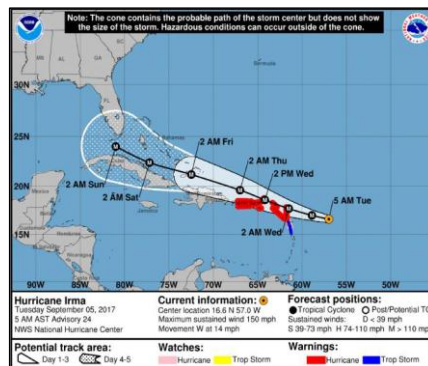
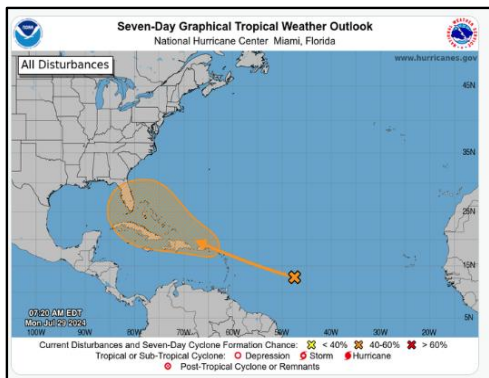
Formatted: Left, Line spacing: Exactly 13.95 pt

Seven-Day Outlook forecast:

Example ~~of NHC's Storm Cone Projected Path, Containing Path~~ Activating Central Florida Region:

Formatted: Not Expanded by / Condensed by

Formatted: Not Expanded by / Condensed by



Central Florida Region Defined:



The Central Florida Region includes the Orlando metropolitan area (Orange, Lake, Osceola, and Seminole Counties), and Sumter, Polk counties in the interior, Citrus, Hernando, Hillsborough, Pasco, and Pinellas counties on the west coast and Volusia and Brevard Counties on the east coast.

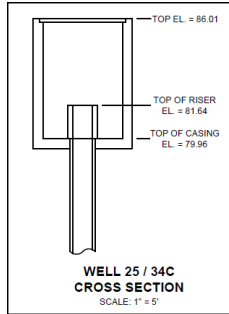
Active Lake Level Alteration Activities- City Wide Specifics

- Remove the six risers from the drain wells on Lake Killarney
- Open valve to the MLK Pond drain well
- Remove top weir board on Lake Bell
- Open gate on the Winter Park Racquet Club Pond outfall
- Check valves (2) are closed and operational at WP18 golf course
- Remove all retractable grass carp fence barriers
- Inspect all drain well intakes maintaining free and clear of debris
- Issue lake closure protocol for the Chain of Lakes at elevation of 66.1 ft.

Active and Adaptive Management of Lake Levels- Lakes Killarney and Lake Bell Plan

1. City will monitor lake elevation levels on Lake Killarney and Lake Bell daily, during hurricane season, June 1st to November 30th, via Smart Technology utilizing telemetry elevation gauges. These gauges can be accessed remotely and provide an alert notification should the elevation stage higher than desired due to an intermittent storm. Staff will not solely rely on the device but will routinely inspect and log field data.
2. During hurricane season, June 1st to November 30th, the top weir board for Lake Bell will be removed and replaced after hurricane season. [Desired lake elevation management requires analysis through a basin drainage study.](#)
3. Removal of the six drain well risers [on Lake Killarney](#) will be enacted when the NHC's projected storm ~~cone touchpath threatens~~ the Central Florida Region (defined above). If the approaching storm turns, the risers will be reinstalled as soon as the storm threat is over.
4. City will maintain and clean drain well intakes, collection boxes and traps, and manage street cleaning services [especially with increased frequency](#) during hurricane season.
5. A secured email will be provided to the Lake Killarney Board to report **non-emergency** related activities [or call 407-599-1313](#). Otherwise, follow standard emergency response by dialing 911.

Lake Killarney Drain Well Specifications:



- Without risers on the drain wells, Lake Killarney lowers 0.1-0.2 ft per day.
- The top of each riser is on average 81.66 ft, the top of each drain well casing is on average 80.0 ft, the weir to Lake Gem discharges at 82.7 ft.



NATURAL RESOURCES & SUSTAINABILITY DEPARTMENT CHECKLIST

During National Hurricane Season, June 1st to November 30th, the Lake Bell top weir board will be removed.

168 hours (7 days) prior to storm at any time of the year

- Monitor storm models via National Hurricane Center's (NHC) Seven-Day Tropical Weather Outlook.
- Refer to established protocol under City of Winter Park's Flood Management Guide.
 - Lower lake elevations, where permissible.
 - Lake Killarney's six drain well risers and Lake Bell top weir board will all be removed in advance whereby the ~~track projected path~~ issued by the National Hurricane Center ~~come touches~~ threatens the Central Florida region and replaces ~~it the risers~~ when the storm is no longer a threat.

120 hours (5 days) prior to storm

- Monitor storm models.
- Provide staff with tracking sheets for manpower hours and equipment usage for Federal Emergency Management Agency (FEMA) records.
- Notify laboratory of potential lake sample submittals. Coordinate with water & wastewater laboratory manager.
- Inspect control and outflow structures located on the lakes, including leaf trap devices; maintain free and clear of debris.
- Coordinate with solid waste services vendor on logistics for pre and post storm.

72 hours (3 days) prior to storm

- Inspect all the weirs and grass carp barriers including the ones located downstream of lakes Bell, Killarney, Berry and Maitland; maintain free and clear of debris.
- Inspect culvert box under bridges at Temple Trl, Stierling Ave and S. Pennsylvania Ave to ensure free and clear of debris.
- Inspect drain well intake structures on Lake Killarney and all land locked lakes (Knowles, Spier, Forest, Midget, as well as the Seminole County drain well on N. Lakemont Avenue); maintain free and clear of debris.
- Inspect canals within the Chain of Lakes and Howell Creek, upstream of Lake Virginia, and downstream of the Howell Branch weir.
- Coordinate solid waste services logistics and messaging with Communications Department and Assistant City Manager; includes debris management.
- Coordinate with Urban Forestry on contracted vendor for felled tree services in creeks/conveyances.

48 hours (2 days) prior to storm

- Meet with staff to go over responsibilities and verify contact information.
- Prioritize daily departmental functions.
- Remove MLK, Jr. Park drain well and Winter Park Racquet Club pond outfall board.
- Prepare and secure equipment and PPE:
 - All boats, vehicles, and gas cans filled
 - Clean and remove all debris from work vehicles
 - Clamshell ready and operational
 - Secure barges at Kraft Gardens
 - Move all Lakes Division supplies into boathouse or break room area (buoys, etc.)
 - Test all chainsaws and make sure that PPE is in good condition
 - Each driver with PPE in work vehicle

24 hours (1 day) prior to storm

- Remove retractable grass carp barriers at lakes Bell and Berry.
- Meet with staff to go over final details data assessment.
- Prioritize departmental functions every day.

During the storm

- Natural Resources & Sustainability ~~is not classified as a first responder and~~ does not have a manned role at the EOC center during the storm. ~~Staff to~~Staff remain in a safe location.
- All Lakes Division staff and department director will commence damage assessments when deemed safe. Office staff to service phone lines and emails. Sustainability Division staff to service phone lines and emails, ~~assisting assist~~ in solid waste services logistics and communications or ~~be other assigned assignment~~ as required.
- Establish communication with damage assessment team with deployment time and locations.

Immediately after the storm when conditions are safe

- Damage assessment teams deployed to inspect all conveyances, outfalls, weirs, drain wells and high-risk areas (i.e. Special Flood Hazard Area- SFHA). Clear immediate hazards.
- Collector app utilized to document environmental damage. Include photos.
- Track manpower hours and equipment usage for FEMA records.
- Implement ~~lake closure~~emergency management activities ~~activities~~ for lakes as deemed necessary: Chain of Lake elevation closure for Dinky Dock ramp at >66.1 ft (NAVD 88).
- Monitor and record lake elevations. Report anomalies to Public Works Department.
- Implement debris management activities.

Formatted: Not Expanded by / Condensed by

Days/weeks after the storm

- Post-storm environmental/water quality monitoring including environmental assets.
- Report damage assessment for state assistance and grant ~~submittals;~~submittals, such as Natural Resources Conservation Service (NRCS).
- Grass carp barriers re-installed when conditions are favorable.

- Coordinate teams with Urban Forestry to recover fallen trees in waterways noted in damage assessments.
- Perform continual monitoring and messaging related to lake hazards:
 - Recreational use of lakes will be allowed once it is determined that safe boating activities can resume without potential damage to private property or the danger of colliding with submerged storm debris.
- Perform continual monitoring and messaging related to solid waste services and debris management until cleared.
- Effective communications with lake patrons, both residential and commercial, related to lake closures; dock safety warnings with submerged electrical components; submerged hazards warning; and lake contamination warnings.
- Perform continual monitoring and messaging related to lake elevations-reinstate drain wells and weir closures, when appropriate.
- Refer to established policy: Flood Management Guide.

Formatted: Left, Indent: Left: 0.5", Hanging: 0.25", Right: 0", Space Before: 0 pt, Line spacing: Exactly 13.75 pt, Tab stops: 0.75", Left + Not at 1.19" + 1.19"

Formatted: Font: 12 pt



PUBLIC WORKS DEPARTMENT STREETS DIVISION CHECKLIST

Off season preparations

- Conduct quarterly meetings with directors, supervisors, crew chiefs, and all staff to review the following:
 - Written hurricane preparedness procedures and where to locate the document.
 - Team members list including updated phone numbers to be activated during Emergency Operations Center (EOC) operations. There must be two separate teams listed for relief following the initial 24-hour period.
 - Equipment list to be used during EOC operation, ~~Equipment list to include~~ trucks, loaders, generators, barricades and sand bagger.
 - Coordinate with the city’s procurement division to secure vendors for additional bypass pumps, vacuum trucks, loaders and generators on an as-needed basis.
- Be sure to have all proper and updated forms for reporting staff’s storm response activities.
 - All streets infrastructure to be inspected and maintained on predetermined schedules. The following items must be maintained year-round in proper functioning condition.
 - Storm sewer inlets, pipes, treatment structures, and outfalls
 - Traffic signals and signs
 - Street sweepers

168 hours (7 days) prior to storm

- Monitor storm models via National Hurricane Center’s (NHC) Seven-Day Tropical Weather Outlook.
- Refer to established protocol under City of Winter Park’s Flood Management Guide.
 - Lower lake elevations, where permissible.
 - Lake Killarney’s six drain well risers and Lake Bell top weir board will all be removed in advance whereby the projected path issued by the National Hurricane Center threatens the Central Florida region and replaces the risers when the storm is no longer a threat.
 - ~~Lake Killarney drain well riser and Lake Bell top weir board will be removed in advance whereby the track issued by the National Hurricane Center cone touches the Central Florida region and replace when storms are no longer a threat.~~

72 hours to 48 hours (3-2 days) prior to storm

- Test all equipment for proper working order.
 - Make sure all equipment gas tanks are filled, and batteries are charged.
 - Generators used for supplying power to traffic signals to be tested and filled with gas.
 - Have additional gas cans filled.
- Prepare sandbagging operations site.
 - Decide with city management on an appropriate location and coordinate with the Communication Department to prepare a map, distribution schedules and notifications.
 - Mobilize sand, bags and equipment to the location.
 -

Formatted: Font: 12 pt

Formatted: Bulleted + Level: 2 + Aligned at: 1.25" + Indent at: 1.5"

- Each household will be provided eight bags with proper proof of residency unless otherwise directed by city management.
 - Prepare coordination with the police department for ID verification and traffic control.
- Increase levels of storm sewer cleaning and street sweeping operations.
- Verify schedules for both teams to begin the overnight and relief shifts.
- Hold a procedure and general safety meeting with both teams before the EOC activation.

24 hours (1 day) prior to storm

- Stop all city and private construction activities and secure sites from any potential erosion and/or wind damage.
- Mobilize and stage all heavy equipment to strategic locations to be used throughout the city.
 - NW Area - Public Safety Facility (500 N. Virginia Ave.)
 - SE Area - Fire Station #62 (300 S. Lakemont Ave.)
 - SW Area - City Lot (1210 Palmetto Ave.)
 - NE Area - City Operations Center (1409 Howell Branch Road)
- Share team member names and contact numbers with the Public Works Director and Assistant Director.
- Prepare sleeping arrangements and purchase food for the overnight shift team.
- Verify all equipment is ready in place with full tanks of gas.
- Load and secure barricades on trucks to be dispatched.

Commented [SM1]: Check that this can still be used

During the storm

- Stay safe inside until EOC managers clear the city staff for response activities.

Immediately after the storm when conditions are safe

- Assist Ppolice and Ffire Ddepartments to clear streets for emergency response.
- Assist the Electric and Water & Wastewater Departments clearing streets to perform their response and repair activities.
- Setup closures and barricade off flooded and obstructed streets and roadways.
- Inspect all signalized intersections for functionality and perform repairs as needed. Repairs requiring a bucket truck can only take place when winds diminish to 30mph or less.
- Clear all storm drains from obstructions to ensure proper drainage.
- Assist the city's Urban Forestry Division with downed tree removals.
- Begin assisting the Natural Resources & Sustainability Department with monitoring of the water levels in the city's lakes and ponds.
- Setup bypass pumping operations on lakes and/or ponds reaching higher levels which potentially could flood surrounding structures/homes.
- Barricade or cone off any potholes which could cause damage to vehicles.

Formatted: List Paragraph, Indent: Hanging: 0.25", Space Before: 1.05 pt, Bulleted + Level: 2 + Aligned at: 0.75" + Indent at: 1", Tab stops: 1", Left

Days/weeks after the storm

- Continue streets clearing and debris removal and storm drain clearing for proper drainage.
- Assess any potholes locations for storm pipe failures and schedule necessary repairs.
- Continue monitoring water levels in lakes and ponds and add or relocate bypass pumping activities accordingly.



CIP PROJECT CONSIDERATIONS & STUDIES FOR STORM RESILIENCY

The flood elevation in the Winter Park Chain of Lakes is controlled by a weir located on the north side of Lake Maitland at Howell Branch Road. The control elevation for the chain of lakes was studied for a Letter of Map Revision (LOMR) in 2009. The SJRWMD confirmed that the current control elevation of 66.18 ft was best for all communities upstream and downstream and it was not to be adjusted.

The following is a suggested list that should be updated regularly and as funding allows:

- Continue to develop a 5-year CIP to include the recommendations generated by the three Major Basin Studies completed in December 2024. These recommendations include:
 - o Improvements to the Lake Bell, Lake Killarney, and MLK Pond drainage basins
 - o Considerations for permanent lake interconnects for the City's landlocked lakes
 - o Improvements to the drainage basin that contributes to the Little Econ basin
- Following FS 252.363 provision allowing to adjust/pump lake down during declared state of emergency, establish Memorandum of Understanding with SJRWMD for all potential drawdowns:

Section 252.363 of the Florida Statutes provides that upon the declaration of a state of emergency, permits and other authorizations are tolled for the duration of the declaration, and that they may be extended automatically upon the exercise of the notice requirements of Section 252.363(1)(a) for an additional six months. The tolling and extension provisions apply to the expiration of:

- Development orders issued by a local government
- Building permits
- Florida Department of Environmental Protection or Water Management District permits issued pursuant to Part IV of Chapter 373, Florida Statutes

- Consider purchase of additional bypass pump(s) including floating intake attachment and suction and discharge hoses.

—Maintain a survey record of lowest Finished Floor Elevation (FFE) for all City lakes.

- Consider increasing the volume of the MLK Pond and lowering the surrounding neighborhood flood stage

a. A flood study was performed in 2020 for the Community Redevelopment Agency (CRA) watershed basin by Geosyntec. This study provided four alternatives for increasing volume in the MLK Pond

i. Alt 1—Exfiltration Basin

1. Decrease in peak stage: 0.26 ft

2. Estimated cost: \$6,516,024

ii. Alt 2—New interconnect to Lake Rose

1. Decrease in peak stage: 0.05 ft

2. Estimated cost: \$172,378

iii. Alt 3—Exfiltration basin and interconnect to Lake Rose

Formatted
Formatted: Font: 12 pt
Formatted: Bulleted + Level: 1 + Aligned at: 0.5" + Indent at: 0.75"

Formatted: Font: Calibri, 12 pt, Italic
Formatted: Bulleted + Level: 3 + Aligned at: 1.5" + Indent at: 1.75"
Formatted: Font: Calibri, 12 pt, Italic

Formatted: Font: 12 pt

Formatted: List Paragraph, Justified, Right: 0.12", Space Before: 0.05 pt, Line spacing: Multiple 1.06 li, Bulleted + Level: 1 + Aligned at: 0.5" + Indent at: 0.75", Tab stops: 1", Left

Formatted: Right: 0.12", Line spacing: Multiple 1.06 li, Bulleted + Level: 1 + Aligned at: 0.5" + Indent at: 0.75"

Formatted: Right: 0.12", Space Before: 0.05 pt, Line spacing: Multiple 1.06 li, Bulleted + Level: 1 + Aligned at: 0.5" + Indent at: 0.75", Tab stops: 1", Left + Not at 1.5" + 1.5"

1. ~~Decrease in peak stage: 0.2 ft~~
2. ~~Estimated cost: \$2,065,776~~
- iv. ~~Alt 4 – (COMPLETED) Relocating Killarney interconnect from Beachview Ave to intersection of Morse Blvd and Harper St~~
 1. ~~Decrease in peak stage: 0.02 ft~~
 2. ~~Estimated cost: \$35,830~~
 - b. ~~Perform study to expand the overall footprint of the pond for more stormwater storage by strategically selecting park areas of lower usage~~
 - c. ~~Consider partnering with private property owners near MLK to expand~~
-
- ~~Develop 5-10 year CIPs for lake interconnections—perform hydraulic studies to determine feasibility and associated cost.~~
 - a. ~~Lake Sylvan to Lake Mizell~~
 - b. ~~Lake Grace to Lake Forest~~
 - c. ~~Lake Chelton to Lake Sue~~
 - d. ~~Lake Tuscany to Lake Temple to Howell Branch Pond~~
 - e. ~~Lake Compton to Lake Spier~~
-
- ~~Develop drainage study for Lake Killarney, Lake Bell and Lake Wilderness to address feasibility and cost for rerouting emergency stormwater overflow and evaluate weir elevations.~~

- ~~Develop drainage study for Howell Creek Basin of Winter Park that includes the Chain of Lakes, Lake Sue, and Lake Berry.~~
- ~~Develop drainage study for Little Econ Basin of Winter Park that includes Interlachen and WP18 (formally Winter Park Pines).~~
- ~~Following FS 252.363 provision allowing to adjust/pump lake down during declared state of emergency, establish Memorandum of Understanding with SJRWMD for all potential drawdowns: Section 252.363 of the Florida Statutes provides that upon the declaration of a state of emergency, permits and other authorizations are tolled for the duration of the declaration, and that they may be extended automatically upon the exercise of the notice requirements of Section 252.363(1)(a) for an additional six months. The tolling and extension provisions apply to the expiration of:

 - a. ~~Development orders issued by a local government~~
 - b. ~~Building permits~~
 - c. ~~Florida Department of Environmental Protection or water management district permits issued pursuant to Part IV of Chapter 373, Florida Statutes~~~~
- ~~Consider purchase of bypass pump(s) including floating intake attachment and suction and discharge hoses.~~
- ~~Perform a survey to record lowest Finished Floor Elevation (FFE) for all City lakes.~~
- ~~Consider installing auto-read lake level gauges with telemetry services for major City lakes.~~
- ~~Consider installing additional weather stations with telemetry services within City limits.~~

Commented [SM2]: Replace all of this with better language, mentioning the completed studies

Formatted: Font: 12 pt

Formatted: Bulleted + Level: 1 + Aligned at: 0.5" + Indent at: 0.75"

Formatted: Justified, Right: 0.12", Space Before: 0.05 pt, Line spacing: Multiple 1.06 li, Bulleted + Level: 1 + Aligned at: 0.5" + Indent at: 0.75"

Commented [SM3]: Do we want to acknowledge somewhere in this document that these have been complete?

Formatted: Font: 12 pt



Lake Killarney Board

agenda item 7.c

item type

Staff Updates

meeting date

September 3, 2025

prepared by

Victoria Tabor, Administrative Coordinator III

approved by

Victoria Tabor, Administrative Coordinator III

subject

Upcoming Events

- Fix It! Don't Pitch it! - September 6th 8am @ Winter Park Community Center
- Orange County Lake Killarney Advisory Board Meeting - September 11th 5pm @ Public Safety Building (500 N. Virginia Ave.)
- Paddleboard Cleanup - September 13th 9am @ Kraft Azaela/Lake Maitland
- Get Hooked! - October 4th 7am @ MLK Pond
- Paddleboard Cleanup - Fall TBD @ Lake Killarney

motion | recommendation**background****alternatives | other considerations****fiscal impact****attachments**

None



Lake Killarney Board

agenda item 7.d

item type

Staff Updates

meeting date

September 3, 2025

prepared by

Victoria Tabor, Administrative Coordinator III

approved by

Victoria Tabor, Administrative Coordinator III

subject

Stormwater Management Update

- CIP Update
- Killarney Dr. Pipe Replacement Timeline
- Map of Gay Rd New Development
- Map of Private Exfiltration Systems (Contributing Basin for Lake Killarney)
- Lakefront Construction Update

Follow-up Items

- Orange County Killarney Dr. Update
- Street Sweeping Contracted Services Update
- Major Outfalls Inspection Schedule

motion | recommendation**background****alternatives | other considerations****fiscal impact****attachments**

1. SW Update 9.25 Lake Killarney Board

Stormwater Staff Update

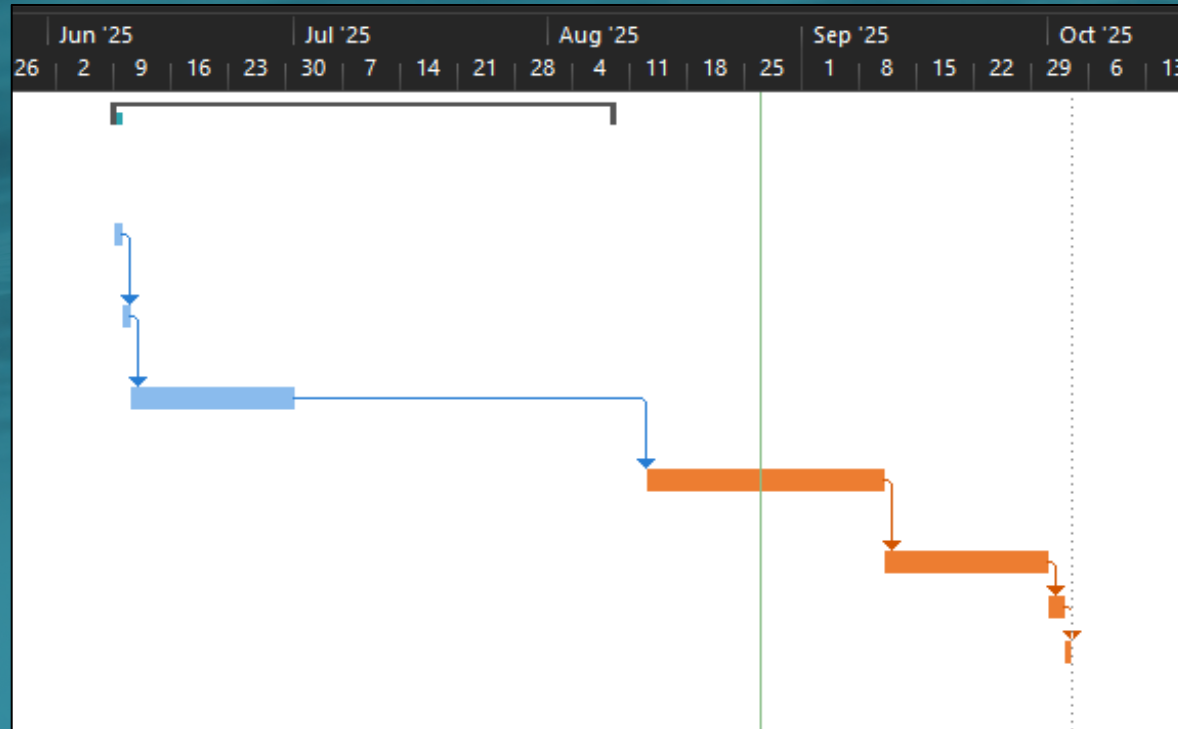
Lake Killarney Board Stormwater CIP – Fiscal Year 2025

| | | | |
|---|-----------------|-----------|---|
| Drainage Improvements - Recent years of unusually heavy rainfall events have revealed several substandard drainage conditions in various locations throughout the City. | Annually Funded | \$42,074 | Several in-house drainage improvements projects for 2023-24 - Completed replacement of 70ft of 24 inch RCP crossing Joeline Court, and 120ft of 18 inch HDPE at the north end of Laurel Road. New inlet at Arbor Park Dr. Ongoing - Lake Knowles Cir/ Edgewater Ave Pipe Replacement. |
| | | | Stormwater Outfall Dredging - The City recently entered a new contract, dredging on several stormwater outfalls started in Aug 2023, and will continue as needed. |
| | | | Upcoming |
| | | | 1600 Spruce Ave Pipe Replacement |
| | | | Shultz Ave Pipe Repair |
| | | | Cherokee Ave drainage improvements |
| Seminole County Ditch Piping (along Arbor Park Dr) – Drainage ditch behind the homes along Arbor Park Drive has a shared drainage basin with Seminole County. Funding is provided for the design and construction to pipe the ditch. | 2016 | \$532,418 | The Interlocal Agreement was approved by the City Commission and by the Seminole County Commission. 60% plans completed and submitted to Seminole County. Permit exemption documents are being prepared. Estimated start date August. |
| Stirling Bridge Replacement | 2024 | \$17,243 | Design is underway. |
| Killarney Dr - Drainage & Street Improvements | 2025 | \$73,724 | Combine failing outfalls into one outfall, includes new inlets. Construction is 30% complete. Estimated completion August 2025. |
| Palmer Ave at Old England - Drainage Improvements-Phase 1 | 2025 | \$249,750 | Replacement outfall at Old England Ave, north of Palmer Ave. Permit application has been submitted to SJRWMD. Permit received. Additional information is being prepared for SSL authorization. |
| Mayflower - Drainage Ditches Dredging | 2025 | \$120,000 | Dredging of drainage ditches that begin at the Mayflower property to the north. To be paid by NRCS grant. Debris removal work has commenced. |
| Lake Spier Drainwell | 2024 | \$139,870 | Both wells installed. Load testing will commence early July, and will be followed by the construction of the intake structure. |

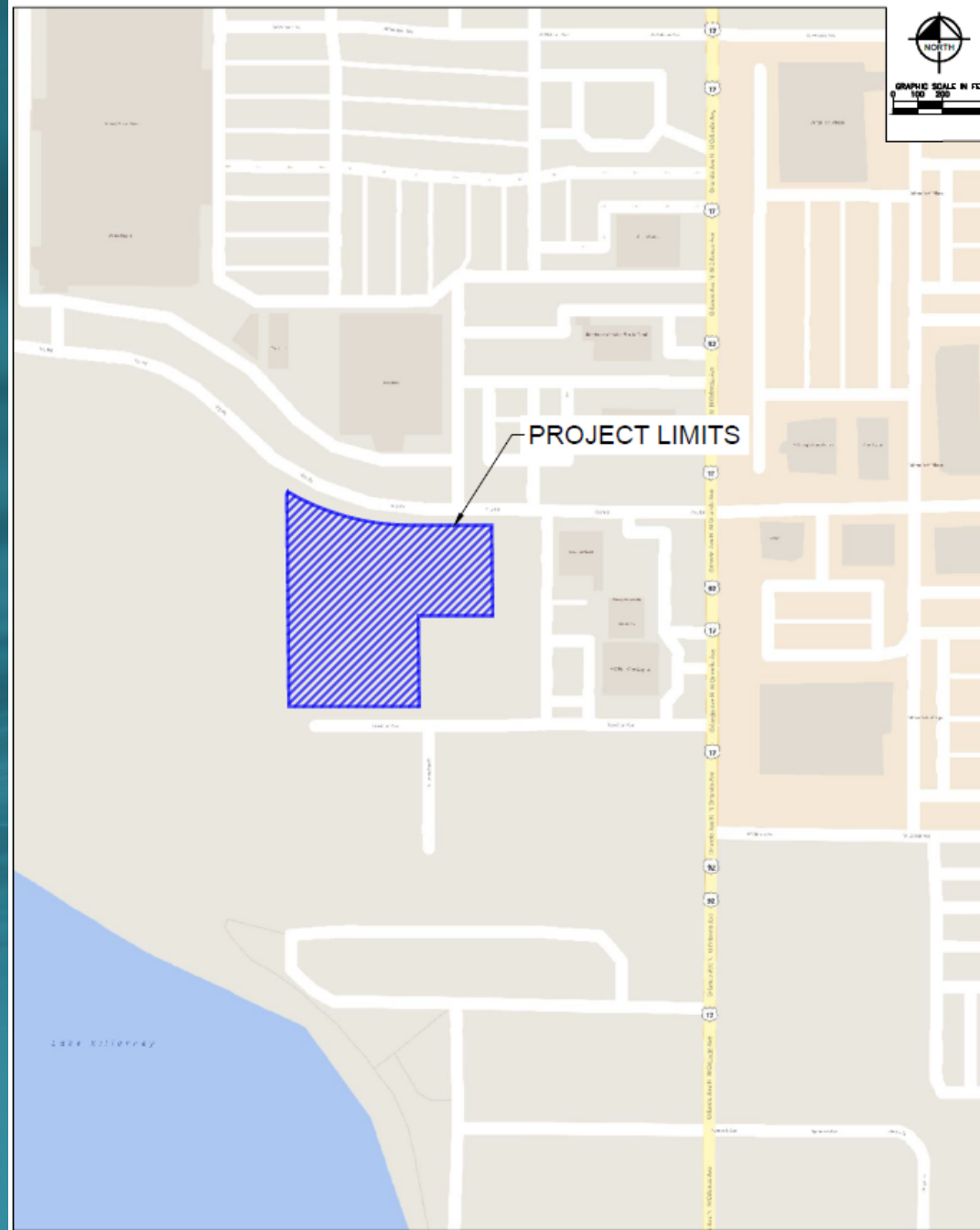
Staff Update - Infrastructure Projects

Lake Killarney Board

Killarney Dr Pipe Replacement Estimated Schedule



New Development on Gay Rd



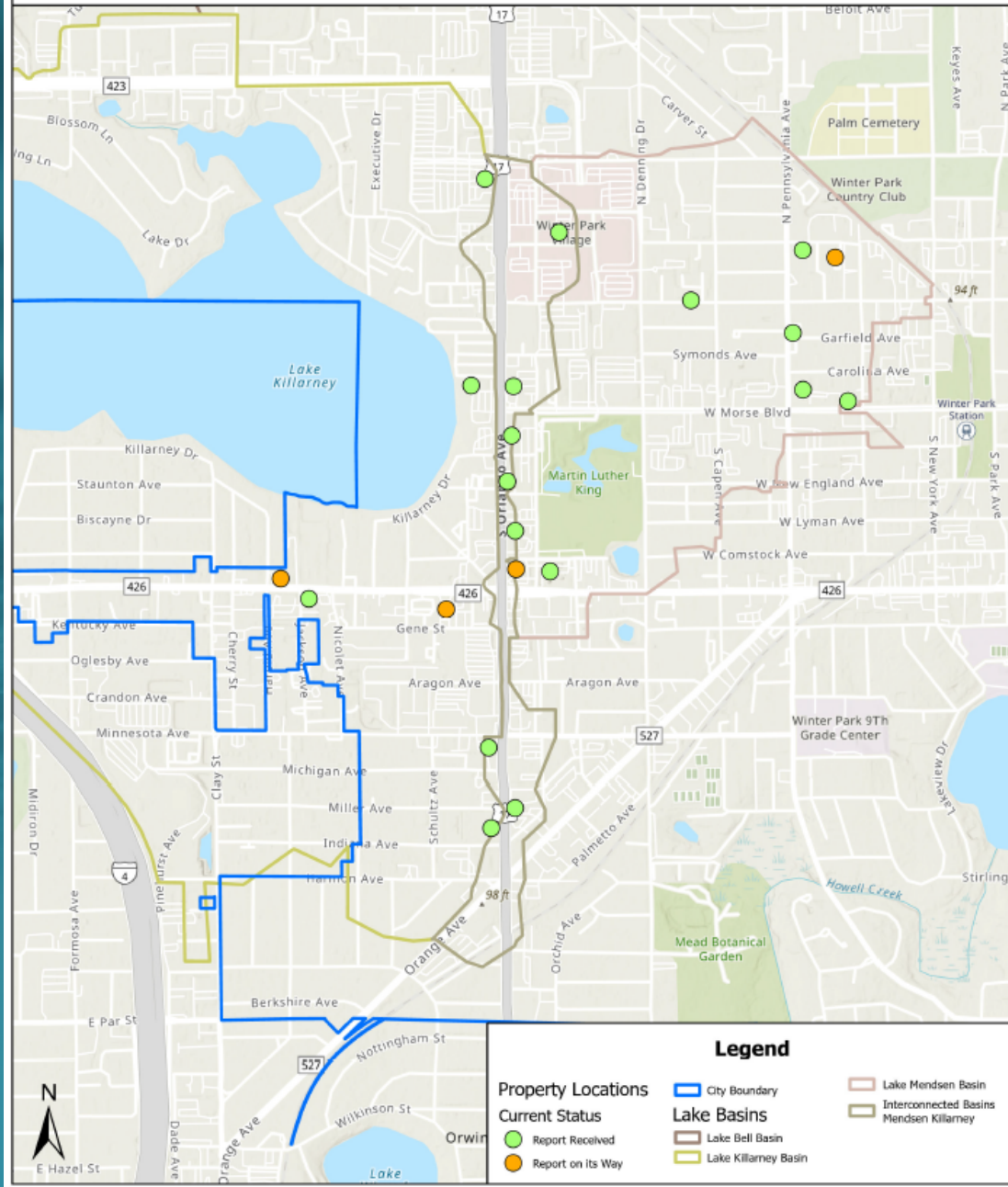
EX-2

OH WINTER PARK
WINTER PARK, FLORIDA

LOCATION MAP



Private Underground Stormwater Management Maintenance Program - Current Status



Stormwater Staff Update

Lake Killarney Board
Current Lakefront Construction



Stormwater Staff Update

Lake Killarney Board

- Follow-up items:
 - Orange County Killarney Dr.
 - Major Outfall Inspection Schedule



item type

Staff Updates

meeting date

September 3, 2025

prepared by

Victoria Tabor, Administrative Coordinator III

approved by

Victoria Tabor, Administrative Coordinator III

subject

Requested Deliverables

- Map of Private Lift Stations

motion | recommendation

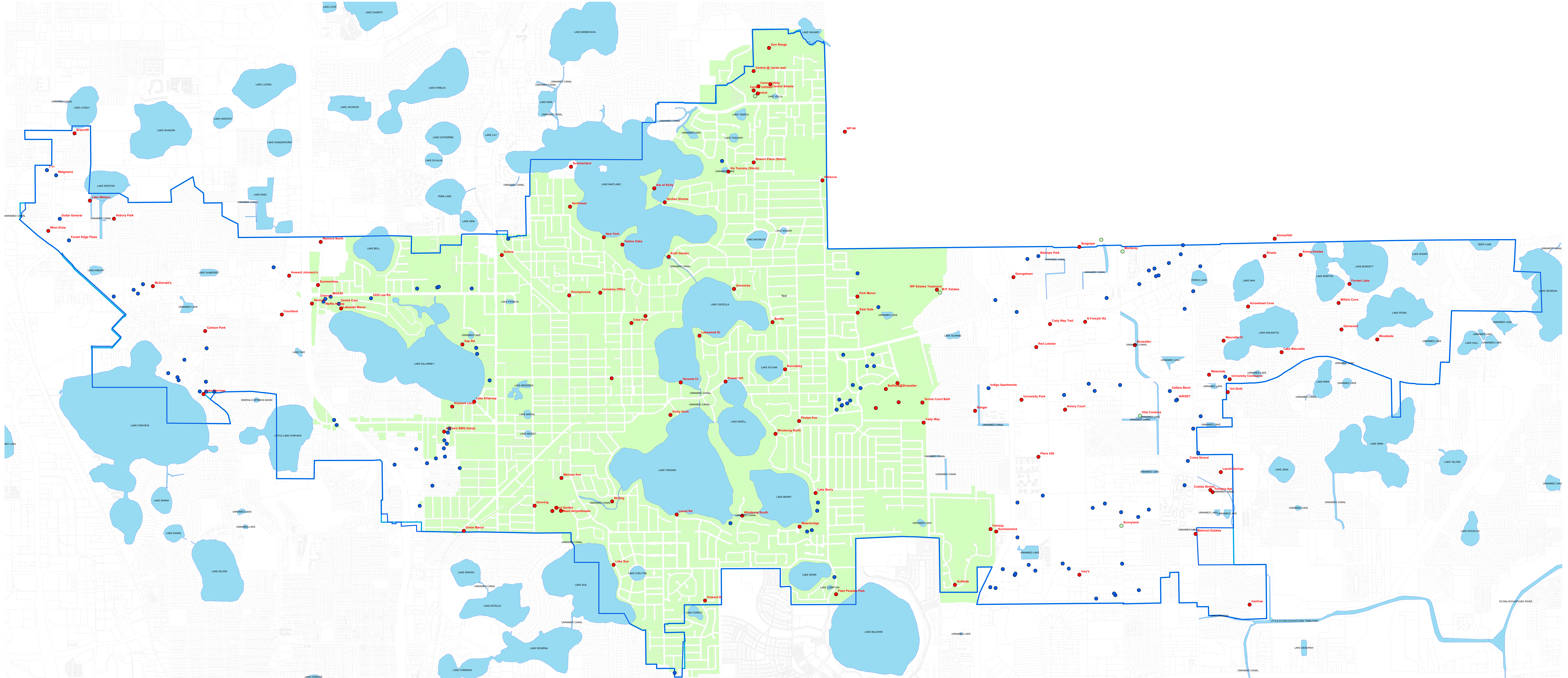
background

alternatives | other considerations

fiscal impact

attachments

1. Map of Private Lift Station





Lake Killarney Board

agenda item 8.a

item type

Board Comments

meeting date

September 3, 2025

prepared by

Victoria Tabor, Administrative Coordinator III

approved by

Victoria Tabor, Administrative Coordinator III

subject

Discussion of Public Comments Received

motion | recommendation**background****alternatives | other considerations****fiscal impact****attachments**

None



Lake Killarney Board

agenda item 9.a

item type

Upcoming Agenda Items

meeting date

September 3, 2025

prepared by

Victoria Tabor, Administrative Coordinator III

approved by

Victoria Tabor, Administrative Coordinator III

subject

Upcoming Agenda Items

motion | recommendation**background****alternatives | other considerations****fiscal impact****attachments**

None



item type

Upcoming Agenda Items

meeting date

September 3, 2025

prepared by

Victoria Tabor, Administrative Coordinator III

approved by

Victoria Tabor, Administrative Coordinator III

subject

Summary of Meeting Action Items

motion | recommendation

background

alternatives | other considerations

fiscal impact

attachments

None